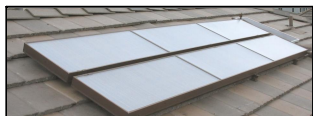


“Skyline”



System, Collector and Component Price List
5840 Gibbons Dr. Suite H, Carmichael, CA 95608
Phone: (888) 801-9060 (916) 481-7200 Fax: (916) 481-7203
Info@SolarRoofs.com
November 4, 2008



Note: This price list supercedes all previous price lists - Check Web Site for Updates.

INDEX – Note all systems with “Skyline” collectors Qualify for the 30% Federal Tax Credit

CONTENTS:

System Overview and Defaults	Page 1 - 3
Delivery	Page 4
System Configurations	Pages 5 - 29
Tropical – No freeze or temperatures ever below 45°F	
• Skyline1: Uses a 12 Volt PV powered pump.	
• Skyline2: 110-volt pump and differential control can be used as a tropical system.	
• Skyline3: SRCC OG-300 rated, uses a 12-volt PV powered pump.	
And	
Temperate – Prices for Temperate system Options including Recirculation	
Freeze Protection for light freeze temperatures down to 30°F, No Hard Freeze	Pages 5 – 10
Our Most Popular System with Light Freeze protection, the Skyline3:	Pages 9 – 10
• Skyline2: 110-volt pump with recirculation differential control, has FV04 or FV05 freeze valve option.	
• Skyline3: SRCC OG-30 rated, 12 volt PV powered pump, includes FV04 or FV05 passive freeze valve.	
Freeze – Areas with Hard Freeze (or areas with bad water requiring closed loop):	Pages 11 - 18
Our Most Popular Freeze Proof System, the Skyline5:	Pages 17 - 18
• Skyline4: Freeze closed loop uses a 110 volt pump and differential controller as standard. Skyline4 also has an external heat exchanger using 110 volt or PV power.	
• Skyline5: is SRCC OG-300 rated closed loop (requires 81V080HE1 tank), using a 12 Volt PV powered pump.	
System Options (Including SSC1 Side by Side option, Tilt Kits, Colors, Etc...)	Page 19
Collector and Component Price List	Page 20
Collector Options and Tank Top Connect Price List	Page 21
System Components and Parts	Page 21
Order Form	Page 23
Space Heating	Page 24 - 27
Specialized Air Collectors	Page 28
Specialized Glazed Pool Collectors	Page 29

Please Note:

SRCC OG-300 Certified Systems “Skyline3” and “Skyline5” are **100% RUN BY THE SUN** and come standard with PV Pumped solar loop, Tempering valve, splash guard, Solar Loop Temperature Gauges and special OG-300 Labeling.

Systems “Skyline1”, “Skyline2” and “Skyline4” have the same Premium “Skyline” SRCC OG-100 Certified collectors and parts as systems “Skyline3” and “Skyline5” but are not OG-300 System rated. Standard systems 2 and 4 are 110 Volt and come with a high quality Differential control with collector and tank bottom temperature readouts. System 4 Power Rod has an optional PV powered pump.

All “Skyline” systems are Powerful, Durable and Attractive Systems that are Much Easier and Safer to Install than Conventional Solar Thermal Systems. These are Important Points that give “Skyline” systems important advantages over all competition. Not just different, but a truly better value.

There are a great variety of needs by different customers and we have attempted to give the greatest flexibility with the following systems and pricing.

All Prices start at the “Silver” Level with “Gold” and “Platinum” levels as upgrades.

“Silver” systems are *Standard* packages that compare to most “solar water heating kits” sold on the internet but are far easier to install. Silver systems are available with 10-01 collectors in Musket Brown or Dove Gray with Ell Bracket to mount the collectors to your rails or structure. Included: Union bodies to connect stacked collectors together, 4, 3/8” to 1/2” copper to copper adapters and 2” of 3/8 copper, Installation, Operations and Maintenance Manuals and labels. As with other standard “internet kits”, you must provide fittings, copper tubing, wires, roof boots, and mounting rails. See additional upgrades for complete turnkey kits. Silver systems are recommend for professionals or highly skilled DIY.

“Gold” systems are *Deluxe* “recommended” packages, with 100% of the no solder solar loop and a lot more standard components than most solar water heating kits to make it far easier to install. It includes either 10-01 or 20-01 collectors; a complete no-solder solar loop with all fittings (open loops have a choice of bottom or top connect); Twin digital readout box with switch on the Skyline1; 12 Volt “Eagle 2” Differential Controller with Skyline3, Skyline4 PV, and Skyline5; 50’ of 1/2” OD copper tubing; sensor wires; Exclusive predrilled and assembled collector rail mount system with color coded “U” Brackets with a choice of "Stacked" or "Side by Side" collector layouts; Installation, Operation and Maintenance Manuals and labels.

“Platinum” systems are a *Premier* system, custom tailored to the customer’s needs.

It is the world’s most complete and easiest to install solar water heating package. It includes either 10-01 or 20-01 collectors; a complete no-solder solar loop with all fittings and a choice of bottom or top connect; Twin digital readout box with switch on Skyline1, 12 Volt “Eagle 2” Differential Controller including 4 sensors with Skyline3, Skyline4 PV, and Skyline5; 50’ of copper tubing; sensor wires; Exclusive Pre-assembled “No Solder” Tempering Valve Assembly; Exclusive predrilled collector rail mount system with color coded “U” Brackets with a choice of "Stacked" or "Side by Side" collector layouts; Skyline5 includes an Exclusive Vacation Check Valve Bypass Valve; Choice of 2 Standard and 24 Free Optional Collector Trim Colors; All Insulation; Polyurethane Roof Sealant; Color Matched can of trim paint; Aluminum tape to cover outside lines. Closed loop systems include Our High Quality Propylene Glycol, System 5 includes supper bypass valve, Custom installation support, Installation, Operation and Maintenance Manuals and labels.

Note: Storage Tanks Are Not Included In Price.

DO NOT USE PEX or other plastic tubing in a pressurized open or closed solar loop.

DO NOT USE a hot water re-circulation loop pump with a solar tank because it de-stratifies the tank and greatly reduces efficiency. If unavoidable, return the re-circulation loop to the top of the tank. We recommend a water conserving demand type unit like the Metlund product as seen on: www.GotHotWater.com

System Overview and Defaults

Both the 10-01 and 20-01 Collectors are OG-100 Certified and qualify for Federal Tax Credits*

There are a great variety of needs by different customers and we have attempted to give the greatest flexibility with the following systems and pricing.

All Open Loop systems (1-3) are designed to be installed with the existing or an added standard water heating tank and have a bottom (standard and optional top connect).

Closed Loop system Skyline5 REQUIRES a Rheem Heat Exchanger tank for the OG-300 rating that is purchased separately.

Systems should be sized to have a minimum of 1 gallon of storage per each square foot of collector area, 1.5 or 2 gallon of storage per each square foot of collector area is recommended.

For any Gold or Platinum system: One (1) 20-01 collectors can be substituted for Two (2) 10-01 collector. For “Skyline3” and “Skyline5” this substitution also qualifies for OG-300.*

Rails and U bracket mounting kits are included with all Gold and Platinum systems but not with Silver kits.

*The Solar Rating and Certification Corporation provide certification programs and national rating standards for solar energy equipment. The OG-100 (collector) & OG-300 (system) certified collectors and systems qualify for the 30% Federal Tax Credit.

System Code Explanation

Example: Collector Model X001YZC50

X = 1001 or 2001 (10 or 20 s/f collectors, series 01)

Y = System, 1, 2, 3, 4, or 5 (if for collectors only, this number is skipped)

Z = Quantity of collectors; where **Z**, for residential, = 1 through 4 (20-01), 1 through 8 (10-01), or any number for commercial.

C = Collectors **50** = The SRCC Rated Capacity of Water Heater, usually 50 or 80 gallons.

Separated by a dash or slash, all Numbers and Letters following the system code are Options and are usually listed in groups of 4 to 6. EXAMPLE: SSC1 = Optional Side by Side Collector Array Installation Kit.

Yellow Highlight = Our most popular Systems and Options
SolarRoofs.com can help you customize your systems

Skyline System Defaults**

- Musket Brown (C101) is the Standard Color (Medium Dove Gray (C109) is also a free color option available)
- Stacked Flush Mount Rail system (MR#C) for stacked collector array installation kit (SC01)

STANDARD Example: 200134C would be a Skyline3 with 4 Musket 10-01 collectors stacked with 3 rails.

A Side by Side Option (SSC1) applies for even numbers of collectors only.

Example: 100112C-SSC1 or 200112C-SSC1 would be (2) 10-01 or (2) 20-01 collectors, Skyline1 with Side by Side Install Option. The 10-01 kit would be supplied with (4) full single collector mounting rails and hardware, (2) for each 10-01 collector. The 20-01 kit would be supplied with (6) full single collector mounting rails and hardware, (3) rails for each collector.



- **No Soldering is needed for all *Gold* and *Platinum* Solar Loops.**
- ***Gold* systems include a solder type tempering valve and will require soldering for tank installation.**
- **The *Platinum* system comes with a special pre-soldered “MVT2” tempering valve assembly.**

DELIVERY

Your shipping delivery preference can help determine collector size.

You can call us for a quote or use the following

10-01



The 10-01 collector is usually shipped by **FedEx Ground** (upon request we can also ship via **UPS**), which is usually the most cost effective way to ship up to four (4) 10-01 collectors.

Add Packaging: \$30 for boxing the first collector and \$15 per collector over 1, each boxed 10-01 collector is 26 pounds, 74" long x 22" wide x 5" high. Add 4' in height per collector over 1.

For a System: Add \$20.00 for boxing the components: 24" x 24" x 12." System box weight is about 35 lb.

<http://www.fedex.com/us/ground/main/?link=4>

20-01



The 20-01 collectors always requires **FedEx Freight** delivery and usually costs the least for 60 S/F or more. Due to shipping costs we recommend a **MINIMUM** of (2) 20-01 collectors via **FedEx Freight**.

Fill out the rates section: 2 collectors = 250 pounds. Add 50 lbs per collector over the first two. Use a 63% discount and **Class 77.5** for shipments to the 48.

Add Packaging: First two collectors: \$120.00 and \$20 per each additional collector over two.

For a System: Add \$20.00 for boxing the components: 24" x 24" x 12." System box weight is about 35 lb.

**If not a business Freight delivery, add \$72.00 for home delivery
(Residential businesses are considered a home delivery)**

<http://www.fedex.com/us/freight/main>

Up to 4, 10-01 Collectors are Generally Less Expensive To Ship than 2, 20-01 Collectors

Skyline1 - Open Loop, 12 Volt PV, for Tropical Climates
"Open Loop" Tropical Systems are good for the Florida Keys, Caribbean, Hawaii
Skyline1 Qualifies for Federal Tax Credit under SRCC OG-100

Skyline1 is a dramatically easier to install system using and is 100% run by the sun! Its Solar Electric (PV) panel powers a sophisticated 12 Volt pump which circulates potable water through the collectors and then returns the solar heated water into the existing electric, gas or propane storage tank or added storage tank used for solar only. This system is for use in areas with no freeze or light freeze when used with the Dole Freeze valve option. For Tilt Kits, see system options.

The **Silver Skyline1** system includes the basic parts you need to add solar water heating to an existing or added storage tank in a home, cabin, boat or RV. 2 ½" compression unions, 2 copper adaptors and 2' of 3/8" copper tubing are included to convert from the collector's 3/8" nominal copper size to ½" nominal copper. As with other typical solar water heating kits, no roof boots, fittings or tank connections are included so additional materials, soldering and technical skills are required to finish this system.

Silver Skyline1 system includes:

1. SolarRoofs.com's exclusive Light Weight, Easy to Install Skyline 10-01 collector (s) with all copper, "Crystal Clear" coated high performance absorber. 4 Ell mounting brackets, 4 washers and 8 tec screws are included per collector.
2. Sophisticated 12 Volt Laing D5 Electronic Circulator.
3. High quality "PV" solar electric panel matched to power need of system.
4. 1, 1/2" male Adjustable Pressure Relief Valve (set to 150lb)
5. 2 Hose bibs with ½" male thread
6. 2 Ball valves with ½" sweat fittings
7. 2, ½" compression unions plus one union body per additional stacked collector.
8. 4, ½" x 3/8" copper reducing adaptors
9. 2' of 3/8" copper tubing
10. Exclusive, zero resistance floating ball check valve with ½" male pipe thread fittings.
11. Installation Manual, Operations and Maintenance Manual, Labels

Gold Option (HIGHLY RECOMMENDED): In addition to the above, the Skyline1 Deluxe Gold System makes your system very easy to attach to a standard existing or added water heater. Includes items 1-11 plus 12-24

The Gold Skyline1 system Includes:

12. Choice of either 10-01 or 20-01 collectors.
13. Exclusive predrilled and assembled collector rail mount system with color coded "U" Brackets.
14. Choice of "Stacked" or "Side by Side" collector layouts.
15. Roof mounting lag set or special mounting as needed for composition or tile roof.
16. Exclusive, 100% complete no-solder solar loop with all fittings.
17. Coin Vent with pre-soldered assembly.
18. 2, color coded roof boots.
19. PV Panel Mounting Kit.
20. Twin digital thermometer box with on / off switch.
21. 25' of PV wire.
22. Exclusive bottom "Quick Connect" that replaces the drain at the bottom of the tank with an easy to install "coaxial" fitting. This fitting allows the solar collector's feed and return line to share the same hole. Returning solar heated water goes through a center tube into the tank. The warmer solar heated water immediately rises and at the same time cool water is being pulled by the solar pump through the space around the hot return tube. Use top connect when space is limited in front of the tank, or in areas with a lot of sediment.
23. Top Connect is available at no additional cost.
24. 50' of ½" OD soft copper tubing.

Platinum Option: **This is the Ultimate Premium no solder system** with 100% of the parts and insulation needed for a complete, professional installation! Includes items 1-24 plus 25-30

The Platinum Skyline1 system Includes:

25. Choice of 2 Standard and 24 Free Optional Collector Trim Colors
26. Preassembled "No Solder" Tempering Valve assembly with flex tubing connections
27. 36' of high temperature 5/8" x ½" wall Insulation (more if needed) + 6' of 7/8 x ½" wall insulation.
28. Tube of high quality Polyurethane Roof Sealant.
29. Aluminum tape to cover and protect outside lines.
30. Color Matched can of trim paint to paint outside aluminum insulation cover, rails, etc.

Tropical Open Loop Skyline1 (SILVER):	Model #	Price
(1) 10-01 (10 ft²) – Cabin / Boat / Motor-Home	100111C	\$861.00
(2) 10-01 (20 ft²) for 1 to 2 people	100112C	\$1,159.00
(3) 10-01 (30 ft²) for 3 to 4 people	100113C	\$1,459.00
(4) 10-01 (40 ft²) for 3 to 5 people	100114C	\$1,759.00
(5) 10-01 (50 ft²) for 4 to 6 people	100115C	\$2,059.00
(6) 10-01 (60 ft²) for 5 to 7 people	100116C	\$2,659.00
(8) 10-01 (80 ft²) for 6 to 10 people, Gold and Platinum in SSCI Only	100118C	\$3,259.00
GOLD Option: This Highly Recommended 100% complete solar loop makes your system much easier to install! Please see description	S1GO	\$486.00
PLATINUM Option: The Ultimate Solar System! This 100% complete solar System has it all including pre-soldered water side tempering valve, all insulation and custom installation support and more. Please see description	S1PL	\$847.00
80 Gallon 4 Top Port Solar Tank. For Gold and Platinum	TC80FL	\$896.00
120 Gallon 4 Top Port Solar Tank. For Gold and Platinum	TC120FL	\$1,096.00
Skyline1 System and Collector Configuration Options:		
Standard Color: Musket Brown (a dark architectural brown)	C101	\$0.00
Standard Color Option: Dove Gray (an attractive Medium Gray)	C109	\$0.00
Gold: Optional Trim Colors: Choose from one of 24 Optional Colors	CXXX	\$85.00
Gold and Platinum: Stacked Collector Array Installation Kit (default):	SC01	\$0.00
Gold and Platinum: Side by Side Collector Array Installation Kit (End to End Option for Even Numbers of Collectors):	SSC1	\$0.00
Gold and Platinum: Substitute One (1) 20-02 collector for every Two (2) 10-01 collectors - Minimum 2, 20-01 collectors, requires special crating and shipment by freight, Please call factory.	2001	\$0.00
Tropical Skyline1 Options:		
50 foot roll of 3/8" ID, 1/2" OD soft copper tubing	TR50	\$98.00
Silver: Bottom "Quick Connect" balance of parts	QC01	\$159.00
Silver: Stacked Collector Array Plumbing Kit:	SC01	\$78.00
Silver: Digital Twin Temperature Readout with sensors, tape, and spare batteries	DTT1	\$128.00
Silver and Gold: Tempering Valve (3/4" C x C x C)	MV01	\$98.00
Silver and Gold: Solar Top Connect with Tempering Valve (for flex connect)	TC03	\$245.00
Gold: Top Tempering Valve Assembly - use with bottom connect or 4 port solar tank, for flex connect to water side, pre-soldered for easy installation	MVT1	\$185.00
Gold: Solar Top Connect without Tempering Valve (for flex connect to water side)	TC02	\$0.00
Quad Flow Diverter (with 4 - 3/4" solder connections for duel tanks)	QF34	\$94.00
180°F High Temperature snap switch (place on cold in) Opens at 180°F, Closes at 140°F	H180	\$22.00
250° F 2" Temperature Gauge with 1/2" MPT fitting	TG01	\$38.00
Insulation: High Temperature Solid 1/2" wall for 1/2" tube X 6' long	IS12	\$9.75
Insulation: High Temperature Solid 1/2" wall for 3/4" tube X 6' long	IS34	\$13.00
Skyline1 Light Open Loop Freeze Protection		
Silver: 45°F Freeze "Dole" Valve (Light protection - Starts to drip water at 45F -1/2" male)	FV45	\$135.00
Gold and Platinum: Light Freeze Option includes Passive 45 degree Dole Valve, directions and all fittings and is for light, short term freeze protection to 30°F.		
For Standard Stacked mounting system	FV04	\$168.00
For Optional SSC1 Side by Side mounting system	FV05	\$186.00

Skyline2 - Open Loop, 110 Volt, for **Temperate** or **Tropical** Climates

Qualifies for Federal Tax Credit under SRCC OG-100

Skyline2 is a dramatically easier to install system using a traditional 110 Volt open loop with a Sophisticated Digital Readout Differential Controller powering a high quality 110 Volt Pump that circulates potable water through the collectors and then returns the solar heated water into the existing electric, gas or propane storage tank or added storage tank used for solar only. This system is for use in areas with no freeze or light freeze with the Differential Controllers re-circulation freeze protection feature activated. The Dole Freeze valve option is highly recommended even in light freeze temperate areas for passive protection in case of power outages. For Tilt Kits, see system options.

The **Silver** Skyline2 system includes the basic parts you need to add solar water heating to an existing or added storage tank in a home, cabin, boat or RV. 2 ½" compression unions, 2 copper adaptors and 2' of 3/8" copper tubing are included to convert from the collector's 3/8" nominal copper size to ½" nominal copper. As with other typical solar water heating kits, no fittings or tank connections are included so soldering and technical skills are required to finish this system.

Silver Skyline2 system includes:

1. SolarRoofs.com's exclusive Light Weight, Easy to Install Skyline 10-01 collector (s) with all copper, "Crystal Clear" coated high performance absorber. 4 Ell mounting brackets, 4 washers and 8 tec screws are included per collector.
2. High quality 110 Volt Circulator with line cord
3. Sophisticated Digital Readout Differential Controller with 2 sensors and high temperature limit
4. 1, 1/2" male Adjustable Pressure Relief Valve (set to 150lb)
5. 2 Hose bibs with ½" male thread
6. 2 Ball valves with ½" sweat fittings
7. 2, ½" compression unions plus one union body per additional stacked collector.
8. 4, ½" x 3/8" copper reducing adaptors
9. 2' of 3/8" copper tubing
10. Exclusive, zero resistance floating ball check valve with ½" male pipe thread fittings.
11. Installation Manual, Operations and Maintenance Manual, Labels

Gold Option (HIGHLY RECOMMENDED): In addition to the above, the Skyline2 Deluxe Gold System makes your system very easy to attach to a standard existing or added water heater.

The Gold Skyline2 system Includes:

12. Choice of either 10-01 or 20-01 collectors.
13. Exclusive predrilled and assembled collector rail mount system with color coded "U" Brackets.
14. Choice of "Stacked" or "Side by Side" collector layouts.
15. Roof mounting lag set or special mounting as needed for composition or tile roof.
16. Exclusive, 100% complete no-solder solar loop kit with all fittings.
17. Coin Vent with pre-soldered assembly.
18. 2, color coded roof boots.
19. 25' of sensor wire and pump line cord.
20. Exclusive bottom "Quick Connect" that replaces the drain at the bottom of the tank with an easy to install "coaxial" fitting. This fitting allows the solar collector's feed and return line to share the same hole. Returning solar heated water goes through a center tube into the tank. The warmer solar heated water immediately rises and at the same time cool water is being pulled by the solar pump through the space around the hot return tube. Use top connect when space is limited in front of the tank, or in areas with a lot of sediment.
21. Top Connect is available at no additional cost.
22. 50' of ½" OD soft copper tubing.

Platinum Option: **This is the Ultimate Premium no solder system** with 100% of the parts and insulation needed for a complete, professional installation!

The Platinum Skyline2 system Includes:

23. Choice of 2 Standard and 24 Free Optional Collector Trim Colors
24. Preassembled "No Solder" Tempering Valve assembly with flex tubing connections
25. 36' of high temperature 5/8" x ½" wall Insulation (more if needed) + 6' of 7/8 x ½" wall insulation.
26. Tube of high quality Polyurethane Roof Sealant.
27. Aluminum tape to cover and protect outside lines.
28. Color Matched can of trim paint to paint outside aluminum insulation cover, rails, etc.

Temperate Open Loop Skyline2 (SILVER):	Model #	Price
(1) 10-01 (10 ft²) – Cabin / Boat / Motor-Home	100121C	\$967.00
(2) 10-01 (20 ft²) for 1 to 2 people	100122C	\$1,267.00
(3) 10-01 (30 ft²) for 3 to 4 people	100123C	\$1,567.00
(4) 10-01 (40 ft²) for 3 to 5 people	100124C	\$1,867.00
(5) 10-01 (50 ft²) for 4 to 6 people	100125C	\$2,167.00
(6) 10-01 (60 ft²) for 5 to 7 people	100126C	\$2,467.00
(8) 10-01 (80 ft²) for 6 to 10 people, Gold and Platinum in SSCI Only	100128C	\$3067.00
GOLD Option: This Highly Recommended 100% complete solar loop makes your system much easier to install! Please see description	S2GO	\$389.00
PLATINUM Option: The Ultimate Solar System! This 100% complete solar System has it all including pre-soldered water side tempering valve, all insulation and custom installation support and more. Please see description	S2PL	\$749.00
80 Gallon 4 Top Port Solar Tank. For Gold and Platinum	TC80FL	\$896.00
120 Gallon 4 Top Port Solar Tank. For Gold and Platinum	TC120FL	\$1,096.00
Skyline2 System and Collector Configuration Options:		
Standard Color: Musket Brown (a dark architectural brown)	C101	\$0.00
Standard Color Option: Dove Gray (an attractive Medium Gray)	C109	\$0.00
Gold: Optional Trim Colors: Choose from one of 24 Optional Colors	CXXX	\$85.00
Gold and Platinum: Stacked Collector Array Plumbing Kit (default):	SC01	\$0.00
Gold and Platinum: Side by Side Collector Array Installation Kit (End to End Option for Even Numbers of Collectors):	SSC1	\$0.00
Gold and Platinum: Substitute One (1) 20-02 collector for every Two (2) 10-01 collectors - Minimum 2, 20-01 collectors, requires special crating and shipment by freight, Please call factory.	2001	\$0.00
Skyline2 Options:		
50 foot roll of 3/8" ID, 1/2" OD soft copper tubing	TR50	\$98.00
Silver: Bottom "Quick Connect" balance of parts	QC01	\$159.00
Silver: Stacked Collector Array Installation Kit:	SC01	\$78.00
Silver and Gold: Solar 2 Port Top Connect with Tempering Valve (for flex connect)	TC03	\$245.00
Gold: Solar Top Connect without Tempering Valve (for flex connect to water side)	TC02	\$0.00
Gold: Top Tempering Valve Assembly - use with bottom connect or 4 port solar tank, for flex connect to water side, pre-soldered for easy installation	MVT1	\$185.00
Gold: 2, 10 K sensors for 2 additional Differential Controller Temperature Readouts.	210K	\$40.00
Quad Flow Diverter (with 4 - 3/4" solder connections for duel tanks)	QF34	\$94.00
250° F 2" Temperature Gauge with 1/2" MPT fitting	TG01	\$38.00
Insulation: High Temperature Solid 1/2" wall for 1/2" tube X 6' long	IS12	\$9.75
Insulation: High Temperature Solid 1/2" wall for 3/4" tube X 6' long	IS34	\$13.00
Skyline2 Light Open Loop Freeze Protection		
Silver: 45°F Freeze "Dole" Valve (Light protection - Starts to drip water at 45F -1/2" male)	FV45	\$135.00
Gold and Platinum: Light Freeze Option includes Passive 45 degree Dole Valve, directions and all fittings and is for light, short term freeze protection to 30°F. This item complements recirculation freeze protection.		
For Standard Stacked mounting system	FV04	\$168.00
For Optional SSC1 Side by Side mounting system	FV05	\$186.00

Skyline3 – Open Loop, 12 Volt PV, for Tropical or Temperate Climate

“Open Loop” Tropical Systems are good for no freeze areas like the Florida Keys, Caribbean, Hawaii

“Open Loop” Temperate Systems provide light freeze protection for areas like South and Central Florida, Coastal Southern and Central California and other areas where the temperature rarely goes down to 30°F **with NO Hard Freeze.**

System 3 is OG-300 Rated and qualifies for the 30% Federal Tax Credits as well as State and Utility Rebates

Skyline3 is a dramatically easier to install system and is 100% run by the sun! Its Solar Electric (PV) panel powers a sophisticated 12 Volt pump which circulates potable water through the collectors and then returns the solar heated water into the existing electric, gas or propane storage tank or added storage tank. This system is for use in areas with no freeze or light freeze when used with the Dole Freeze valve option. For Tilt Kits, see system options.

The **Silver** Skyline3 system includes the basic parts you need to add solar water heating to an existing or added storage tank in a home or Business. 2 ½” compression unions, 2 copper adaptors and 2’ of 3/8” copper tubing are included to convert from the collector’s 3/8” nominal copper size to ½” nominal copper. As with other typical solar water heating kits, no roof boots, fittings or tank connections are included so additional materials, soldering and technical skills are required to finish this system.

Silver Skyline3 system includes:

1. SolarRoofs.com’s exclusive Light Weight, Easy to Install Skyline 10-01 collector (s) with all copper, “Crystal Clear” coated high performance absorber. 4 Ell mounting brackets, 4 washers and 8 tec screws are included per collector.
2. Sophisticated 12 Volt Laing D5 Electronic Circulator.
3. High quality 12 Volt “PV” solar electric panel matched to the power need of the system.
4. Twin digital thermometer box with on / off switch.
5. Tempering Valve
6. Air Vent
7. 1, 1/2” male Adjustable Pressure Relief Valve (set to 150lb) with roof splash guard.
8. 2 Hose bibs with ½” male thread
9. 2 Ball valves with ½” sweat fittings
10. 2, ½” compression unions plus one union body per additional stacked collector.
11. 4, ½” x 3/8” copper reducing adaptors
12. 2’ of 3/8” copper tubing
13. Exclusive, zero resistance floating ball check valve with ½” male pipe thread fittings.
14. Installation Manual, Operations and Maintenance Manual, Special SRCC OG-300 Labels

Gold Option (HIGHLY RECOMMENDED): In addition to the above, the Skyline3 Deluxe Gold System adds a sophisticated 12 Volt Differential Control and makes your solar loop complete and very easy to install!

The Gold Skyline3 system Includes: 1-14 plus 15-27

15. Choice of either 10-01 or 20-01 collectors.
16. Exclusive predrilled and assembled collector rail mount system with color coded “U” Brackets.
17. Choice of “Stacked” or “Side by Side” collector layouts.
18. Roof mounting lag set or special mounting as needed for composition or tile roof.
19. Exclusive, 100% complete no-solder solar loop with all fittings.
20. Pre-soldered collector assembly for air vent and pressure relief valve.
21. 2, color coded roof boots.
22. PV Panel Mounting Kit.
23. Sophisticated 12 Volt Digital Readout Differential Controller with high temperature limit - replaces box
24. 25’ of PV wire.
25. Exclusive bottom “Quick Connect” that replaces the drain at the bottom of the tank with an easy to install “coaxial” fitting. This fitting allows the solar collector’s feed and return line to share the same hole. Returning solar heated water goes through a center tube into the tank. The warmer solar heated water immediately rises and at the same time cool water is being pulled by the solar pump through the space around the hot return tube. Use top connect when space is limited in front of the tank, or in areas with a lot of sediment.
26. Top Connect is available at no additional cost.
27. 50’ of ½” OD soft copper tubing.

Platinum Option: **This is the Ultimate Premium, easy to install, no solder system!**

The Platinum Skyline3 system Includes: 1-27 plus 28-35

28. Choice of 2 Standard and 24 Free Optional Collector Trim Colors
29. Preassembled “No Solder” Tempering Valve assembly with flex tubing connections
30. 36’ of high temperature 5/8” x ½” wall Insulation (more if needed) + 6’ of 7/8 x ½” wall insulation..
31. Tube of high quality Polyurethane Roof Sealant.
32. Aluminum tape to cover and protect outside lines.
33. Color Matched can of trim paint to paint outside aluminum insulation cover, rails, etc.
34. 2, 10 K sensors for 2 additional Differential Controller Temperature Readouts.
35. FREE OPTION: 4 Way bypass for 2 tank installations

Tropical Open Loop Skyline3 (SILVER): Temperate Light Freeze Protection is Available	Model #	Price
(2) 10-01 (20 ft²) for 1 to 2 people, requires a 50 gallon tank	100132C50	\$1,384.00
(3) 10-01 (30 ft²) for 3 to 4 people, requires a 50 gallon tank	100133C50	\$1,664.00
(4) 10-01 (40 ft²) for 3 to 5 people, requires a 50 gallon tank	100134C50	\$1,964.00
(4) 10-01 (40 ft²) for 3 to 5 people, requires a 80 gallon tank	100134C80	\$1,964.00
(6) 10-01 (60 ft²) for 5 to 7 people, requires a 50 gallon tank	100136C50	\$2,564.00
(6) 10-01 (60 ft²) for 5 to 8 people, requires a 80 gallon tank	100136C80	\$2,564.00
GOLD Option: This Highly Recommended 100% complete solar loop makes your system much easier to install! Please see description	S3GO	\$668.00
PLATINUM Option: The Ultimate Solar System! This 100% complete solar System has it all including pre-soldered water side tempering valve, all insulation and custom installation support and more. Please see description	S3PL	\$898.00
80 Gallon 4 Top Port Solar Tank. For Gold and Platinum	TC80FL	\$896.00
120 Gallon 4 Top Port Solar Tank. For Gold and Platinum	TC120FL	\$1,096.00
Skyline3 System and Collector Configuration Options:		
Standard Color: Musket Brown (a dark architectural brown)	C101	\$0.00
Standard Color Option: Dove Gray (an attractive Medium Gray)	C109	\$0.00
Gold: Optional Trim Colors: Choose from one of 24 Optional Colors	CXXX	\$85.00
Gold and Platinum: Stacked Collector Array Installation Kit (default):	SC01	\$0.00
Gold and Platinum: Side by Side Collector Array Installation Kit (End to End Option for Even Numbers of Collectors):	SSC1	\$0.00
Gold and Platinum: Substitute One (1) 20-02 collector for every Two (2) 10-01 collectors - Minimum 2, 20-01 collectors, requires special crating and shipment by freight, Please call factory.	2001	\$0.00
Skyline3 Options:		
50 foot roll of 3/8" ID, 1/2" OD soft copper tubing	TR50	\$98.00
Silver: Bottom "Quick Connect" balance of parts	QC01	\$159.00
Silver: Stacked Collector Array Plumbing Kit:	SC01	\$78.00
Gold: Solar 2 Port tank Top Connect with Tempering Valve (for flex connect)	TC04	\$195.00
Gold: Top Tempering Valve Assembly - use with bottom connect or 4 port solar tank, for flex connect to water side, pre-soldered for easy installation	MVT2	\$135.00
Gold: 2, 10 K sensors for 2 additional Differential Controller Temperature Readouts.	210K	\$40.00
Quad Flow Diverter (with 4 - 3/4" solder connections for duel tanks)	QF34	\$94.00
250° F 2" Temperature Gauge with 1/2" MPT fitting	TG01	\$38.00
Insulation: High Temperature Solid 5/8" wall for 1/2" tube X 6' long	IS12	\$9.75
Insulation: High Temperature Solid 1/2" wall for 3/4" tube X 6' long	IS34	\$13.00
System 3 Light Open Loop Freeze Protection		
Silver: 45°F Freeze "Dole" Valve (Light protection - Starts to drip water at 45F -1/2" male)	FV45	\$135.00
Gold and Platinum: Light Freeze Option includes Passive 45 degree Dole Valve, Transformer and Diodes for nighttime operation of the pump through the differential control: kit includes directions and all fittings and is for light, short term freeze protection to 30°F.		
For Standard Stacked mounting system	F304	\$178.00
For Optional SSC1 Side by Side mounting system	F305	\$196.00

Skyline4 - Closed Loop Internal Heat Exchanger, 110 Volt*, for Hard Freeze Climate

Qualifies for Federal Tax Credit under SRCC OG-100

Skyline4 is a dramatically easier to install system using a traditional 110 Volt open loop with a Sophisticated Digital Readout Differential Controller powering a high quality 110 Volt Pump. It is for use in areas with Hard Freeze or areas with bad water quality. This closed loop system circulates Non-Toxic Propylene Glycol Antifreeze solution through the collectors and then thru a Heat Exchanger either in a storage tank.

- Skyline4 is available in several configurations to meet special needs. The standard Skyline4 in this section of the price list can be used with any storage tank with an internal heat exchanger.

The **Silver** Skyline4 system includes the basic parts you need to add solar water heating to an existing heat exchanger storage tank in a home, or business. 2, 1/2" compression unions, 2 copper adaptors and 2' of 3/8" copper tubing are included to convert from the collector's 3/8" nominal copper size to 1/2" nominal copper. As with other typical solar water heating kits, no fittings or tank connections are included so soldering and technical skills are required to finish this system.

Silver Skyline4 system includes:

1. SolarRoofs.com's exclusive Light Weight, Easy to Install Skyline 10-01 collector (s) with Choice of Musket (dark brown or Dove (medium) gray trim colors. 4 Ell mounting brackets, 4 washers and 8 tec screws included per collector.
2. High quality 110 Volt Circulator with line cord
3. Sophisticated Digital Readout Differential Controller with high temperature limit
4. 1, 1/2" male Adjustable Pressure Relief Valve (set to 150lb)
5. 2 Hose bibs with 1/2" male thread
6. 1 Ball valve with 1/2" sweat fittings
7. 2, 1/2" compression unions plus one union body per additional stacked collector.
8. 4, 1/2" x 3/8" copper reducing adaptors
9. 2' of 3/8" copper tubing
10. Coin Vent with adaptor to 1/2"
11. Exclusive, zero resistance floating ball check valve with 1/2" male pipe thread fittings.
12. Installation Manual, Operations and Maintenance Manual, Labels

Gold Option (HIGHLY RECOMMENDED): In addition to the above, the Skyline4 Deluxe Gold System makes your system very easy to install.

The Gold Skyline4 system Includes:

13. Choice of either 10-01 or 20-01 collectors.
14. Exclusive predrilled and assembled collector rail mount system with color coded "U" Brackets.
15. Choice of "Stacked" or "Side by Side" collector layouts.
16. Roof mounting lag set or special mounting as needed for composition or tile roof.
17. Exclusive, 100% complete no-solder solar loop kit with all fittings.
18. Coin Vent with pre-soldered assembly.
19. 2, color coded roof boots.
20. Heat Exchange Kit with charging valves for existing or added solar tank with heat exchanger.
21. 25' of sensor wire.
22. Tempering Valve
23. 50' of 1/2" OD soft copper tubing.

Platinum Option: **This is the Ultimate Premium no solder system** with 100% of the parts and insulation needed for a complete, professional installation!

The Platinum Skyline4 system Includes:

24. Choice of 2 Standard and 24 Free Optional Collector Trim Colors
25. Preassembled "No Solder" Tempering Valve assembly with flex tubing connections
26. 36' of high temperature 5/8" x 1/2" wall Insulation (more if needed) + 6' of 7/8 x 1/2" wall insulation.
27. Tube of high quality Polyurethane Roof Sealant.
28. Aluminum tape to cover and protect outside lines.
29. Color Matched can of trim paint to paint outside aluminum insulation cover, rails, etc.
30. 2 Gallons of SolarRoofs.com's Heavy Duty Propylene Glycol
31. 10 K sensors for 2 additional Differential Controller Temperature Readouts.

Freeze Closed Loop Internal Heat Exchanger Skyline4 (SILVER): Set up for use with 80 or 120 Gallon Rheem Heat Exchanger tank with ¾ female fittings, or as adapted to other Internal Heat Exchanger tank.	Model #	Price
(3) 10-01 (30 ft²) for 1 to 3 people (80 gallon tank recommended)	100143C	\$1,750.00
(4) 10-01 (40 ft²) for 3 to 5 people (80 gallon tank recommended)	100144C	\$2,050.00
(5) 10-01 (50 ft²) for 3 to 5 people (80 gallon tank recommended)	100145C	\$2,350.00
(6) 10-01 (60 ft²) for 4 to 6 people (80 - 120 gallon tank recommended)	100146C	\$2,650.00
(8) 10-01 (80 ft²) for 6 people + (120 gallon tank recommended)	100148C	\$3,250.00
GOLD Option: This Highly Recommended 100% complete solar loop makes your system much easier to install! Please see description	S4GO	\$551.00
PLATINUM Option: The Ultimate Solar System! This 100% complete solar System has it all including pre-soldered water side tempering valve, all insulation and custom installation support and more. Please see description	S4PL	\$844.00
Rheem Rudd Richmond 80 Gallon 81V080HE1 tank, Delivered	81V080HE1	\$1,565.00
Rheem Rudd Richmond 120 Gallon 82V120HE1 tank, Delivered	82V120HE1	\$1,895.00
Extended Tank Warranty from 6 to 10 years, includes 2nd Anode Rod	EW10	\$142.00

Skyline4 Collector Configuration Options:		
Standard Color: Musket Brown (a dark architectural brown)	C101	\$0.00
Standard Color Option: Dove Gray (an attractive Medium Gray)	C109	\$0.00
Gold: Optional Trim Colors: Choose from one of 24 Optional Colors	CXXX	\$85.00
Gold and Platinum: Stacked Collector Array Installation Kit (default):	SC01	\$0.00
Gold and Platinum: Side by Side Collector Array Installation Kit (End to End Option for Even Numbers of Collectors):	SSC1	\$0.00
Gold and Platinum: Substitute One (1) 20-02 collector for every Two (2) 10-01 collectors - Minimum 2, 20-01 collectors, requires special crating and shipment by freight, Please call factory.	2001	\$0.00
Freeze Climate Skyline4 Options		
50 foot roll of 3/8" ID, 1/2" OD soft copper tubing	TR50	\$98.00
2, 10 K sensors for 2 additional Differential Controller Temperature Readouts.	210K	\$40.00
Silver: Tempering Valve (3/4" C x C x C)	MV01	\$98.00
Silver: Top Tempering Valve Assembly - use with Heat Exchanger solar tank, for flex connect to water side, pre-soldered for easy installation	MVT1	\$185.00
Gold: Top Tempering Valve Assembly - use with Heat Exchanger solar tank, for flex connect to water side, pre-soldered for easy installation	MVT2	\$135.00
Quad Flow Diverter (with 4 - ¾" solder connections for duel tanks)	QF34	\$94.00
250° F 2" Temperature Gauge with ½" MPT fitting	TG01	\$38.00
Insulation: High Temperature Solid 1/2" wall for 1/2" tube X 6' long	IS12	\$9.75
Insulation: High Temperature Solid 1/2" wall for 3/4" tube X 6' long	IS34	\$13.00
1 Gallon of Heavy Duty Propylene Glycol, For down to -54 F and up to 300 F / 10 year life. Mix 50/50	PGHD	\$26.00

Skyline4 External - Closed Loop External Heat Exchanger, 110 Volt or 12 Volt, for **Hard Freeze Climate**

Qualifies for Federal Tax Credit under SRCC OG-100

Skyline4 External comes with a very efficient “Power Rod” (PR) or “Plate” (PL) type External Heat Exchanger comes with a Sophisticated 110 or 12 Volt Digital Readout Differential Controller powering 2 high quality 110 Volt pumps or with 2 PV panels powering 2, 12 Volt pumps. It is for use in areas with Hard Freeze or areas with bad water quality. This closed loop system circulates Non-Toxic Propylene Glycol Antifreeze solution through the collectors and then thru a Heat Exchanger either in or attached to a storage tank.

The **Silver Skyline4 External Heat Exchanger** system includes the basic parts you need to add solar water heating to an existing water heater storage tank in a home, or business. 2, ½” compression unions, 2 copper adaptors and 2’ of 3/8” copper tubing are included to convert from the collector’s 3/8” nominal copper size to ½” nominal copper. As with other typical solar water heating kits, no fittings or tank connections are included so soldering and technical skills are required to finish this system.

***Silver* Skyline4 External Heat Exchanger system includes:**

1. SolarRoofs.com’s exclusive Light Weight, Easy to Install Skyline 10-01 collector (s) with Choice of Musket (dark brown or Dove (medium) gray trim colors. 4 Ell mounting brackets, 4 washers and 8 tec screws included per collector.
2. External Power Rod (PR) or Plate (PL) type heat exchanger
3. 2 High quality 110 Volt or 12 Volt Circulators
4. Sophisticated 110 or 12 Volt Digital Readout Differential Controller with high temperature limit
5. 1, 1/2” male Adjustable Pressure Relief Valve (set to 150lb)
6. 2 Hose bibs with ½” male thread
7. 1 Ball valve with ½” sweat fittings
8. 2, ½” compression unions plus one union body per additional stacked collector.
9. 4, ½” x 3/8” copper reducing adaptors
10. 2’ of 3/8” copper tubing
11. Coin Vent with adaptor to 1/2”
12. Exclusive, zero resistance floating ball check valve with ½” male pipe thread fittings.
13. Installation Manual, Operations and Maintenance Manual, Labels

***Gold* Option (HIGHLY RECOMMENDED):** In addition to the above, the Skyline4 Gold Deluxe System makes your system very easy to install.

The *Gold* Skyline4 External Heat Exchanger system Includes:

14. Choice of either 10-01 or 20-01 collectors.
15. Exclusive predrilled and assembled collector rail mount system with color coded “U” Brackets.
16. Choice of “Stacked” or “Side by Side” collector layouts.
17. Roof mounting lag set or special mounting as needed for composition or tile roof.
18. Exclusive, 100% complete no-solder solar loop kit with all fittings.
19. Coin Vent with pre-soldered assembly.
20. 2, color coded roof boots.
21. Pre-soldered Heat Exchange Kit with charging valves for existing or added solar tank with heat exchanger.
22. 25’ of sensor wire and pump line cord.
25. Tempering Valve assembly with flex tubing connections.
23. 50’ of ½” OD soft copper tubing.

***Platinum* Option: This is the Ultimate Premium no solder system** with 100% of the parts and insulation needed for a complete, professional installation!

The *Platinum* Skyline4 External Heat Exchanger system Includes:

24. Choice of 2 Standard and 24 Free Optional Collector Trim Colors
25. 36’ of high temperature 5/8” x ½” wall Insulation (more if needed) + 6’ of 7/8 x ½” wall insulation.
26. Tube of high quality Polyurethane Roof Sealant.
27. Aluminum tape to cover and protect outside lines.
28. Color Matched can of trim paint to paint outside aluminum insulation cover, rails, etc.
29. 2 Gallons of SolarRoofs.com’s Heavy Duty Propylene Glycol
30. 2, 10 K sensors for 2 additional Differential Controller Temperature Readouts.

Freeze Closed Loop Skyline4 External (SILVER): Set up with AC or DC pumps and External Heat Exchangers for use with any standard water heating tank.	Model #	Price
(3) 10-01 (30 ft²) for 1 to 3 people (80 gallon tank recommended)	100143C PR or PL	\$2,200.00
(4) 10-01 (40 ft²) for 3 to 5 people (80 gallon tank recommended)	100144C PR or PL	\$2,500.00
(5) 10-01 (50 ft²) for 3 to 5 people (80 gallon tank recommended)	100145C PR or PL	\$2,800.00
(6) 10-01 (60 ft²) for 4 to 6 people (80 - 120 gallon tank recommended)	100146C PR or PL	\$3,100.00
(8) 10-01 (80 ft²) for 6 people + (120 gallon tank recommended)	100148C PR or PL	\$3,700.00
GOLD Option: This Highly Recommended 100% complete solar loop makes your system much easier to install! Please see description	S4GO	\$551.00
PLATINUM Option: The Ultimate Solar System! This 100% complete solar System has it all including water side tempering valve, all insulation and custom installation support and more. Please see description	S4PL	\$844.00
Skyline4 12 Volt PV External Heat Exchanger Option! The ULTIMATE 100% Run by the SUN External Heat Exchanger system. PV powered "Power Rod" (PRPV) or "Plate" (PLPV) Heat Exchanger and 2, 12 Volt Pumps and 2 PV panels	PRPV or PLPV	\$350.00

Skyline4 Collector Configuration Options:		
Standard Color: Musket Brown (a dark architectural brown)	C101	\$0.00
Standard Color Option: Dove Gray (an attractive Medium Gray)	C109	\$0.00
Optional Trim Colors: Choose from one of 24 Optional Colors	CXXX	\$85.00
Freeze Climate Skyline4 Options		
50 foot roll of 3/8" ID, 1/2" OD soft copper tubing	TR50	\$98.00
Silver: Tempering Valve (3/4" C x C x C)	MV01	\$98.00
2, 10 K sensors for 2 additional Differential Controller Temperature Readouts.	210K	\$40.00
Quad Flow Diverter (with 4 - 3/4" solder connections for duel tanks)	QF34	\$94.00
250° F 2" Temperature Gauge with 1/2" MPT fitting	TG01	\$38.00
Insulation: High Temperature Solid 1/2" wall for 1/2" tube X 6' long	IS12	\$9.75
Insulation: High Temperature Solid 1/2" wall for 3/4" tube X 6' long	IS34	\$13.00
1 Gallon of Heavy Duty Drainback tank Propylene Glycol without additives, For down to -54 F and up to 300 F / 10 year life. Mix 50/50	PGDB	\$26.00

Skyline4 Drainback Closed Loop Systems 110 Volt for Hard Freeze Climate

Qualifies for Federal Tax Credit under SRCC OG-100

Skyline4 Drainback systems are simple and never overheat*. They come with Drainback tanks set up to connect to an internal heat exchanger tank or with a very efficient heat exchanger in the drainback tank itself, a Sophisticated 110 or 12 Volt Digital Readout Differential Controller powering high quality 110 Volt pump(s). It is for use in areas with Hard Freeze or areas with bad water quality. The collector feed and return lines must be sloped down to the drainback tank and the standard serpentine Skyline collectors must be level to facilitate drainage. Special fully draining custom Skyline collectors are available that eliminate the need for propylene glycol in the solar loop.

DBT: Drainback tank for use with a tank that has an internal heat exchanger. This closed loop system circulates Non-Toxic Propylene Glycol Antifreeze solution through the Skyline collectors, then through the drainback tank and then thru the heat exchanger in the storage tank.

DBI: Drainback tank with built in Internal heat exchangers can be connected to any existing water heater as a second pump moves potable water through a heat exchanger in the drainback tank.

Currently these systems are available only in *Silver* configurations with 20-01 collectors. Our custom rail mounting system is included. The drainback tanks are delivered directly from the factory in Florida.

*Overheat protection is provided by a setting in the controller that limits the temperature in the storage tank and turns off the pump once that temperature is reached and the fluid in the collectors drains back to the drainback tank. For standard horizontal collectors, any remaining glycol is "blown" into the Drainback upon low pressure steam out.

The *Silver Skyline4 Drainback* system includes the basic parts you need to add solar water heating. As with other typical solar water heating kits, no fittings or tank connections are included so soldering and technical skills are required to finish these systems.

Silver Skyline4 Drainback system includes:

1. SolarRoofs.com's exclusive Light Weight, Easy to Install Skyline 20-01 collector (s) with Choice of Musket (dark brown or Dove (medium) gray trim colors.
2. Exclusive predrilled collector rail mount system with color coded "U" Brackets, Ell mounting brackets, washers and tec screws.
3. 10 or 15 gallon Drainback tank with or without heat exchanger
4. 1 or 2 High quality 110 Volt Circulators including one high head pump for the solar side
5. Sophisticated 110 Digital Readout Differential Controller with high temperature limit
6. 1, 1/2" male low pressure Relief Valve
7. 1 Hose bib with 1/2" male thread
8. Tank combo drain valve with 3/4" female fitting.
9. 2, 1/2" compression unions plus one union body per additional stacked collector.
10. 4, 1/2" x 3/8" copper reducing adaptors
11. 2' of 3/8" copper tubing
12. Installation Manual, Operations and Maintenance Manual, Labels

DBT Skyline4 with 10 gallon Drainback tank for use with an internal heat exchanger (HE) storage tank (SILVER): 20-01 collectors with high head AC pump	Model #	Price
(2) 20-01 (40 ft²) for 3 to 5 people (80 gallon HE tank recommended)	200142C DBT	\$2,300.00
(3) 20-01 (60 ft²) for 4 to 6 people (80 - 120 gallon HE tank recommended)	200143C DBT	\$2,900.00
(4) 20-01 (80 ft²) for 6 people + (120 HE gallon tank recommended)	200144C DBT or DBI	\$3,500.00
Rheem Rudd Richmond 80 Gallon 81V080HE1 tank, Delivered	81V080HE1	\$1,565.00
Rheem Rudd Richmond 120 Gallon 82V120HE1 tank, Delivered	82V120HE1	\$1,895.00
Extended Tank Warranty from 6 to 10 years, includes 2nd Anode Rod	EW10	\$142.00

DBI Skyline4 with 10 gallon Drainback tank with an Internal Heat Exchanger (SILVER): 20-01 collectors with 2 AC pumps (one high head and 1 small pump for the domestic water loop) for use with any standard water heating tank.	Model #	Price
(2) 20-01 (40 ft²) for 3 to 5 people (50 - 80 gallon tank recommended)	200142C DBI	\$2,971.00
(3) 20-01 (60 ft²) for 4 to 6 people (80 - 120 gallon tank recommended)	200143C DBI	\$3,571.00
(4) 20-01 (80 ft²) for 6 people + (120 gallon tank recommended)	200144C DBI	\$4,171.00

Skyline4 Collector Configuration Options:		
Standard Color: Musket Brown (a dark architectural brown)	C101	\$0.00
Standard Color Option: Dove Gray (an attractive Medium Gray)	C109	\$0.00
Optional Trim Colors: Choose from one of 24 Optional Colors	CXXX	\$85.00
Freeze Climate Skyline4 Options		
50 foot roll of 3/8" ID, 1/2" OD soft copper tubing	TR50	\$98.00
Tempering Valve (3/4" C x C x C)	MV01	\$98.00
2, 10 K sensors for 2 additional Differential Controller Temperature Readouts.	210K	\$40.00
Quad Flow Diverter (with 4 - 3/4" solder connections for duel tanks)	QF34	\$94.00
250° F 2" Temperature Gauge with 1/2" MPT fitting	TG01	\$38.00
Insulation: High Temperature Solid 1/2" wall for 1/2" tube X 6' long	IS12	\$9.75
Insulation: High Temperature Solid 1/2" wall for 3/4" tube X 6' long	IS34	\$13.00
1 Gallon of Heavy Duty Drainback tank Propylene Glycol without additives, For down to -54 F and up to 300 F / 10 year life. Mix 50/50	PGDB	\$26.00

Skyline collectors can be used with the Drainback options below when the lines are sloped down to the drainback tank, the collectors are level and a Propylene Glycol mixture is used. Special drainback collectors are available.		
10 gallon Drainback Reservoir, Stainless Steel with level tube - Up to 160 s/f	DB10-SS	\$519.00
10 gallon Drainback Reservoir with 10 s/f Heat Exchanger - Up to 80 s/f	DB10-10X-SS	\$664.00
15 gallon Drainback Reservoir, Stainless Steel with level tube - Up to 320 s/f	DB15-SS	\$589.00
15 gallon Drainback Reservoir with 15 s/f Heat Exchanger - Up to 160 s/f	DB15-15X-SS	\$774.00
20 gallon Drainback Reservoir with 20 s/f Heat Exchanger - Up to 400 s/f	DB20-20X-SS	\$1,124.00
10 Gallon reservoir tank with 10 sq.ft. HX, converts any existing water heating tank into a solar water heating system. This system is just parts and requires skill to assemble: Taco 009 High Head Solar Pump (we recommended up to 24' between bottom of the drainback tank and the top of the collectors), Flange set, Bronze 003 Taco Pump 1/2" Sweat, Differential Control with Sensors (EAGLE-1) Boiler Drain	DX-R Retrofit Kit	\$1,100.00
15 Gallon reservoir tank with 15 sq.ft. HX, converts any existing water heating tank into a solar water heating system. This system is just parts and requires skill to assemble: Taco 009 High Head Solar Pump (we recommended up to 24' between bottom of the drainback tank and the top of the collectors), Flange set, Bronze 003 Taco Pump 1/2" Sweat, Differential Control with Sensors (EAGLE-1) Boiler Drain	DX-R Retrofit Kit	\$1,300.00

Skyline5 - Closed Loop with 12 Volt PV for Hard Freeze Climate

Down to -54° F or areas with bad water quality.

**System 5 is OG-300 Rated and qualifies for the 30% Federal Tax Credits as well as State and Utility Rebates
Cloudier and colder climates require more collector area.**

Skyline5 is 100% Run by the Sun! It has a 12 Volt circulator controlled by a PV Panel. It is for use in areas with Hard Freeze or areas with bad water quality where open loop systems would plug up. This closed loop system circulates a special Non-Toxic Antifreeze solution through the collectors and then thru a Heat Exchanger in the storage tank.

The *Silver* Skyline5 system includes the basic parts you need to add solar water heating to a Rheem, Rudd or Richmond 80 or 120 gallon heat exchanger storage tank. This tank is required for OG-300 rating. The Silver kit includes: 2, ½" compression unions, 2 copper adaptors and 2' of 3/8" copper tubing are included to convert from the collector's 3/8" nominal copper size to ½" nominal copper. As with other typical solar water heating kits, no fittings or tank connections are included so soldering and technical skills are required to finish this system.

Silver Skyline5 system includes:

1. SolarRoofs.com's exclusive Light Weight, Easy to Install Skyline 10-01 collector (s) with all copper, "Crystal Clear" coated high performance absorber. 4 Ell mounting brackets, 4 washers and 8 tec screws are included per collector. Choice of Musket (dark) brown or Dove (medium) gray trim colors.
2. High quality 12 Volt "PV" solar electric panel matched to the power need of the system.
3. Sophisticated 12 Volt Laing D5 Electronic Circulator.
4. Twin digital thermometer box with on / off switch.
5. 1, 1/2" male Adjustable Pressure Relief Valve (set to 150lb) with roof splash guard.
6. Coin Vent with adaptor to 1/2"
7. 2 Hose bibs with ½" male thread
8. 1 Ball valve with ½" sweat fittings
9. 2, ½" compression unions plus one union body per additional stacked collector.
10. 4, ½" x 3/8" copper reducing adaptors
11. 2' of 3/8" copper tubing
14. Tempering Valve
12. Exclusive, zero resistance floating ball check valve with ½" male pipe thread fittings.
13. Installation Manual, Operations and Maintenance Manual, Special SRCC OG-300 Labels

Gold Option (HIGHLY RECOMMENDED): In addition to the above, the Skyline5 Gold System makes your solar loop very easy to install with the following features:

The Gold Skyline5 system Includes 1. – 13. above plus 14 - 25:

15. Choice of either 10-01 or 20-01 collectors.
16. Exclusive predrilled and assembled collector rail mount system with color coded "U" Brackets.
17. Choice of "Stacked" or "Side by Side" collector layouts.
18. Sophisticated 12 Volt Digital Readout Differential Controller with high temperature limit - replaces box
19. Roof mounting lag set or special mounting as needed for composition or tile roof.
20. Exclusive, 100% complete no-solder solar loop kit with all fittings.
21. Pre-soldered roof assembly for coin vent and pressure relief valve.
22. 2, color coded roof boots.
23. Heat Exchange Kit with charging valves for existing or added solar tank with heat exchanger.
24. 25' of sensor wire.
25. 50' of ½" OD soft copper tubing.

Platinum Option: **This is the Ultimate no solder Closed Loop system** with 100% of the parts and insulation needed for a complete, professional installation including our Exclusive Skyline5 Vacation bypass valve and pre-soldered tempering valve assembly!

The Platinum Skyline5 system Includes 1 – 25 above plus 26 – 34 below:

26. Choice of 2 Standard and 24 Free Optional Collector Trim Colors
27. Preassembled "No Solder" Tempering Valve assembly with flex tubing connections
28. 36' of high temperature 5/8" x ½" wall Insulation (more if needed) + 6' of 7/8 x ½" wall insulation.
29. Tube of high quality Polyurethane Roof Sealant.
30. Aluminum tape to cover and protect outside lines.
31. Color Matched can of trim paint to paint outside aluminum insulation cover, rails, etc.
32. 2 Gallons of SolarRoofs.com's Heavy Duty Propylene Glycol (more if needed)
33. 2, 10 K sensors for 2 additional Differential Controller Temperature Readouts.
34. Exclusive Vacation Check Valve Bypass.
35. FREE OPTION: 4 Way bypass for 2 tank installations

Freeze Closed Loop Skyline5 (SILVER): Set up for use with 80 or 120 Gallon Rheem Heat Exchanger tank.	Model #	Price
(4) 10-01 (40 ft²) for 2 to 4 people - WITHOUT 81V080HE1	100154C80EX	\$2,321.00
(6) 10-01 (60 ft²) for 4 to 6 people - WITHOUT 81V080HE1	100156C80EX	\$2,921.00
(8) 10-01 (80 ft²) for 6 + people - SSCI Only, WITHOUT 81V080HE1	100158C80EX	\$3,521.00
GOLD Option: This Highly Recommended 100% complete solar loop makes your system much easier to install! Please see description above	S5GO	\$582.00
PLATINUM Option: The Ultimate Solar System! This 100% complete solar System has it all including insulation, vacation bypass valve, pre-soldered water side tempering valve, all insulation and custom installation support and more. Please see description above	S5PL	\$1,113.00
Rheem Rudd Richmond 80 Gallon 81V080HE1 tank, Delivered	81V080HE1	\$1,565.00
Rheem Rudd Richmond 120 Gallon 82V120HE1 tank, Delivered	82V120HE1	\$1,895.00
Extended Tank Warranty from 6 to 10 years, includes 2nd Anode Rod	EW10	\$142.00

Skyline5 Collector Configuration Options:		
Standard Color: Musket Brown (a dark architectural brown)	C101	\$0.00
Standard Color Option: Dove Gray (an attractive Medium Gray)	C109	\$0.00
Gold: Optional Trim Colors: Choose from one of 24 Optional Colors	CXXX	\$85.00
Gold and Platinum: Stacked Collector Array Installation Kit (default):	SC01	\$0.00
Gold and Platinum: Side by Side Collector Array Installation Kit (End to End Option for Even Numbers of Collectors):	SSC1	\$0.00
Gold and Platinum: Substitute One (1) 20-02 collector for every Two (2) 10-01 collectors - Minimum 2, 20-01 collectors, requires special crating and shipment by freight, Please call factory.	2001	\$0.00
Freeze Climate Skyline5 Options		
50 foot roll of 3/8" ID, 1/2" OD soft copper tubing	TR50	\$98.00
Silver: Tempering Valve (3/4" C x C x C)	MV01	\$98.00
Silver 180°F High Temperature snap switch Opens at 180°F, Closes at 140°F	H180	\$22.00
Silver: Top Tempering Valve Assembly - use with Heat Exchanger solar tank, for flex connect to water side, pre-soldered for easy installation	MVT1	\$185.00
Gold: 2, 10 K sensors for 2 additional Differential Controller Temperature Readouts.	210K	\$40.00
Gold: Vacation Bypass Valve (open valve in summer to bypass check valve)	VBV5	78.00
Gold: Top Tempering Valve Assembly - use with Heat Exchanger solar tank, for flex connect to water side, pre-soldered for easy installation	MVT2	\$135.00
Quad Flow Diverter (with 4 - 3/4" solder connections for duel tanks)	QF34	\$94.00
250° F 2" Temperature Gauge with 1/2" MPT fitting	TG01	\$38.00
Insulation: High Temperature Solid 1/2" wall for 1/2" tube X 6' long	IS12	\$9.75
Insulation: High Temperature Solid 1/2" wall for 3/4" tube X 6' long	IS34	\$13.00
1 Gallon of Heavy Duty Propylene Glycol, For down to -54 F and up to 300 F 10 year life. Mix 50/50	PGHD	\$26.00

System and Collector Options

System Tilt Kits For “Skyline” 10-01 or 20-01

Side by Side Collector Array SYSTEM Option | SSC1 | \$60.00

Note: Side by side installation option available for even numbers of collectors, up to 12, 10-01s or 8, 20-01s per array. 8, 20-01s are an ideal space heating or commercial configuration. With this option, the rail lengths and hardware are adjusted. Allow 24.5' in total width.

1 ½” aluminum Ell legs with 1 ½” aluminum Ell feet and hardware tilt collectors approximately 18 degrees or as specified from existing roof angle.

Tilt kits are used when a better winter angle is desired on a low pitch roof or to “re-orientate” collectors to face south by running the collectors up and down an East or West facing roof. The Default Tilt kit is 18 Degrees. Please specify other tilt angle.

Single Collector rear tilt leg, (No rail, use 2 per 10-01 collector, 3 per 20-01 collector)	TK01-1	8.00 ea
The Tilt Kits Below are for Stacked 10-01 collectors (6' long):		
10-01 Collector		
1 collector = 26” long, 1” sq. alum. tube rails with 6” + legs and hardware	TK01-2	\$50.00
2 collectors = 48” long, 1” x 2” alum. channels with 12” + legs and hardware	TK02-2	\$80.00
3 collectors = 70” long, 1” x 2” alum. channels with 18” + legs and hardware	TK03-2	\$115.00
4 collectors = 92” long, 1’ x 2” alum. channels with 24” + legs and hardware	TK04-2	\$165.00
The Tilt Kits Below are for Stacked 20-01 collectors: (12' long)		
20-01 Collector		
1 collector = 26” long, 1” sq. alum. tube rails with 6” + legs and hardware	TK01-3	\$65.00
2 collectors = 48” long, 1” x 2” alum. channels with 12” + legs and hardware	TK02-3	\$110.00
3 collectors = 70” long, 1” x 2” alum. channels with 18” + legs and hardware	TK03-3	\$145.00
4 collectors = 92” long, 1’ x 2” alum. channels with 24” + legs and hardware	TK04-3	\$205.00
The Tilt Kits Below are for Side x Side 10-01 collectors: (12' - 2" long)		
10-01 Collector		
2 collector = 26” long, 1” sq. alum. tube rails with 6” + legs and hardware	TK01-4	\$100.00
4 collectors = 48” long, 1” x 2” alum. channels with 12” + legs and hardware	TK02-4	\$160.00
6 collectors = 70” long, 1” x 2” alum. channels with 18” + legs and hardware	TK03-4	\$230.00
8 collectors = 92” long, 1’ x 2” alum. channels with 24” + legs and hardware	TK04-4	\$330.00
The Tilt Kits Below are for Side x Side 20-01 collectors: (24' - 2" long)		
20-01 Collector		
2 collector = 26” long, 1” sq. alum. tube rails with 6” + legs and hardware	TK01-6	\$130.00
4 collectors = 48” long, 1” x 2” alum. channels with 12” + legs and hardware	TK02-6	\$220.00
6 collectors = 70” long, 1” x 2” alum. channels with 18” + legs and hardware	TK03-6	\$290.00
8 collectors = 92” long, 1’ x 2” alum. channels with 24” + legs and hardware	TK04-6	\$410.00

Beautiful Collector COLOR Options

One change covers change in Trim color for all collectors in the order

Default Color

Musket Brown (C101) OR Free Optional Dove/Old Town (Medium) Gray (C109)

Optional Colors

Colonial (Light) Gray (C102), Tahoe Blue (C103), Colonial Red (C104), Forest Green (C105), White (C106), Buckskin Brown (C107), Beaver (medium) Brown (C108), C.B. (Medium) Blue (C110), Spanish Green (C111), Storm/Slate (Dark) Gray (C112), Royal Brown (C113), Ivory (C114), Sea Blue (C115), Leaf Green (C116), Pebblestone Clay (C117), Woodbeige (C118), Peach (great on many light orange tile roofs) (C119), Almond (C120), Black (C121), Adobe Tan (C122), Classic Cream (C123), Bronze (CO124), Heritage Cream (CO125), Marine Green (CO126).

Optional Colors | C### | \$85.00

COLLECTOR AND COMPONENT Price List

COLLECTOR and MOUNTING RAIL PRICE LIST

5840 Gibbons Dr. Suite G, Carmichael, CA 95608
Phone: (888) 801-9060 (916) 481-7200 Fax: 481-7203 Email: info@SolarRoofs.com

This Price List is for Individual Components
For Systems, Please See SYSTEM Price List

Note: This price list supercedes all previous price lists - Check Web Site for Updates.

General Sizing Guidelines

Systems should be sized to have a min. of 1 gallon of storage per FT² of collector area, more in hot climates. One 10-01 collector is good for situations such as campers, boats, cabins or as a start to energy independence at home.

To supply 60% - 85% of the hot water needs from solar for residential applications in warm climates the following is recommended: (2) 10-01 collectors, or (1) 20-01 collector for the first person, and (1) additional 10-01 collector per person or (1) 20-01 for every 2 people. In cloudy and/or cold areas where a heat exchanger is needed add (2) 10-01 collectors, or (1) 20-01 for the second person.

Example: A family of 4 in New England should have either six (6) 10-01 or three (3) 20-01 collectors.

Standard Color is Musket Brown (CO101), with a Free option of Dove (Medium) Gray (C109)
(Other color options are available at an extra cost)

For Delivery Options, Please refer to page 2

Note: Fill in # of collectors



Premium 10-01 Collectors

SRCC OG-100 Rated

10 Square Feet at 19 pounds each 20" wide x 6' long x 3" thick

Single piece unit (Includes 4 mounting ell kit)	1001#C	\$349.00
--	---------------	-----------------

A single 10-01 collector includes: (4) 1 1/2" Mounting Ell brackets, (8) color-coded screws to attach mounting ells, and (4) large washers.

10-01 Mounting Rails

SolarRoofs.com provides 10-01 collectors with specific length rails for 1, 2, 3 and 4 stacked collectors. 1 and 2 coll. use 4 mounting points (4 lags) and 3 or 4 coll. Use 6 mounting points (6 lags). 2, 3 and 4 coll. 10-01 kits have color-coded mounting U clips with carriage bolts to make the installation of the longer collectors easier.

(2) Mounting rails with lags (per collector)	MR10#C	\$28.00
---	---------------	----------------

Premium 20-01 Collectors

SRCC OG-100 Rated

20 Sq. Ft., 20" wide X 12' long X 3" thick, 38 pounds

Single piece unit (Includes 6 mounting ell kit)	2001#C	\$622.00
--	---------------	-----------------

A single 20-01 collector includes: (6) 1 1/2" Mounting Ell brackets, (12) color-coded screws to attach mounting ells and (6) large washers.

20-01 Mounting Rails

SolarRoofs.com provides 20-01 collectors with specific length rails for 1, 2, 3 and 4 stacked collectors. 1 and 2 coll. use 4 mounting points (4 lags) and 3 or 4 coll. Use 6 mounting points (6 lags). 2, 3 and 4 coll. kits have color-coded mounting U clips with carriage bolts to make the installation of the longer collectors easier.

(3) Mounting rails with lags (order per collector)	MR20#C	\$36.00
---	---------------	----------------

Custom Parallel Flow Option

For **SRCC OG-300 Skyline3** reoriented tilt Collector and for Drainback Systems

These custom collectors are required for the SRCC OG-300 Skyline3 reoriented tilt kit. With bottom (through roof) or top and bottom side feed and return on one end, slope panel 1/4" per 2' (1.5" overall absolute rise per panel), with 3 mounting rails **Add \$60 per collector (Call for details)**

Right PFR1 (feed and return are out the end of the collector)	PFR1	\$60.00
Left PFL1 (feed and return are out the end of the collector)	PFL1	\$60.00

10-01 and 20-01 Collector Tubing Installation Kits

(SCO1 Stacked Array Kit is Standard with system, SSC1 is a no cost (N/C) option system option)

These kits include the required Pressure Relief Valve, an air coin or auto. vent, all the parts required to connect the collectors to 1/2" OD copper pipe without soldering (see collector installation manual.)

Stacked Collector Array Installation Kit: (1) compression Ell for the feed, (1) compression TEE, (1) 150 Lb pressure relief valve and air vent with pre-soldered adaptor, (1) through roof compression Ell, (1) 2" stick of 1/2" OD copper for the return, & (2) roof boots	SC01	\$78.00
Side by Side Collector Array Installation Kit: (2) Compression Ells, (1) Compression TEE for the feed, (1) Compression ell, (2) Compression TEEs, (1) 150 Lb pressure relief valve and air vent with pre-soldered adaptor to connect to compression TEE for the return, (2) 2" sticks of 1/2" OD copper, & (2) roof boots	SSC1	\$108.00
SC01 Open Loop Light Freeze Valve with install Kit (for Light Passive freeze protection to 30F) FULLY DRAIN BEFORE HARD FREEZE! (STACKED ARRAY ONLY)	FV04	\$168.00
SSC1 Open Loop Light Freeze Valve with install Kit (for Light Passive freeze protection to 30F) FULLY DRAIN BEFORE HARD FREEZE! (SIDE BY SIDE ARRAY ONLY)	FV05	\$186.00

Skyline4 Drainback Closed Loop Space Heating Systems

110 Volt for Hard Freeze Climate

Qualifies for Federal Tax Credit under SRCC OG-100

Skyline4 Space Heating Systems are generally custom and need specific design help from SolarRoofs.com. They can be either Closed loop Glycol or Drainback. Drainback is preferred to prevent summer overheating.

Skyline collectors can be used with the Drainback options below when the lines are sloped down to the drainback tank, the collectors are level and a Propylene Glycol mixture is used. Special drainback collectors are available.

Drainback system tanks are set up to connect to an internal heat exchanger tank (DBT) such as the Rheem / Rudd or Richmond Heat Exchanger (HE) tanks, or with a very efficient heat exchanger that is inside the drainback tank itself (DBI), they can be connected to any standard water heater. A sophisticated 110 Volt Digital 4 Readout Differential Controller with 4 sensors powering high quality 110 Volt pump(s) are included.

Orientation, and Tilt are very important to space heating systems. Because the sun is so low in the winter sky, for best winter operation the collectors need to be facing within 15 degrees of True south and we recommend at least a 55 degree tilt angle for best winter operation and to help prevent summer overheating. Flush mounting collectors on a south wall has proven quite effective and sun reflection off of white rock or snow in front of the collectors helps performance.

NOTE: Because of the need for custom design, only 80, 120 and 160 s/f system packages are priced below.

Drainback space heating systems:

For Drainback systems the collector feed and return lines must be sloped down to the drainback tank and the standard serpentine Skyline collectors must be level to facilitate drainage. Special fully draining custom Horizontal and vertical Skyline collectors are available that eliminate the need for propylene glycol in the solar loop. Drawings, pictures and / or diagrams are needed for this planning process.

DBT: Drainback tank for use with a tank that has an internal heat exchanger. This closed loop system circulates Non-Toxic Propylene Glycol Antifreeze solution through the Skyline collectors, then through the drainback tank and then thru the heat exchanger in the storage tank.

DBI: Drainback tank with built in internal heat exchangers can be connected to any existing water heater as a second pump moves potable water through a heat exchanger in the drainback tank.

Currently these systems are available only in *Silver* configurations with 20-01 collectors. Our custom rail mounting system is included. The drainback tanks are delivered directly from the factory in Florida.

Drainback overheat protection is provided by a setting in the controller that limits the temperature in the storage tank and turns off the pump once that temperature is reached and the fluid in the collectors drains back to the drainback tank. For horizontal collectors, any remaining glycol is "blown" into the Drainback upon low pressure steam out.

Sizing Your Space Heating System:

Size the total area of Skyline collectors to be 4-15% of the floor area to be heated (depending on the insulation of the building). Choose the package that most closely matches the square footage of your project and the climate you live in. Milder areas like coastal or southern areas can be effective with as little as 4% of the floor area while very cold sunny areas may need 15%. You may want to do an area specific system where smaller collector areas will work.

Example of a 2000 sq./ft. home:

2000 x 0.08 (6%) = 120 sq. ft of Skyline collector area
2000 x 0.08 (8%) = 160 sq. ft of Skyline collector area
2000 x 0.1 (10%) = 200 sq. ft. of Skyline collector area
2000 x 0.12 (12%) = 240 sq. ft. of Skyline collector area
2000 x 0.08 (15%) = 300 sq. ft of Skyline collector area

Configurations:

SolarRoofs.com provides basic diagrams for space heating systems but there are so many variations that it is not possible to cover them all.

System space heating kits are shown with various amounts of collectors, an Eagle 2 controller with 4 sensors, the Drainback tank, 1 or 2 pumps with one of them being a high head bronze pump for the solar loop. Tilt kits are available at \$50.00 per collector.

“Chill Chaser” Systems

The Chill Chaser is a unique and very simple concept for warming rooms.

These are the simplest systems with a complete Turbonics Hydronic fan coil with built in circulator heating unit that can be placed where ever needed. It works on the principle that when the thermostat in the Chill Chaser senses that there is a need for heat the fan in the Chill Chaser turns on and blows the heat out if the water to air coil into the room.

Connection of the “Chill Chaser” is simple as the unit simply pulls heat from the hot side of the solar tank and returns it to the cold side. It is important that the solar tank be “pure” meaning that the tank must be 100% solar to be most effective. If the electric backup is connected you would be heating with electricity, not a good plan. Also as with all solar system, there must not be a recirculation loop connected to the solar tank.

A simple Electric water heater single pole, double through thermostat (SPDT) mounted in the standard water heater position can be used to activate the pump circuit so when there is a call for heat the pump will only turn on if there is enough heat in the solar storage tank to make a contribution.

Other control options include the Eagle set point controller or a SPDT Remote Bulb Thermostat such as the Sunne TC119 available from Grainger under stock # 2E848.

Homes with radiant floors and air heating systems are good candidates for solar heating but homes with baseboard heat are not because the temperatures required for proper baseboard convection are too high for efficient solar operation. Diagrams are below showing the basic layout for these systems.

The *Silver Skyline4 Drainback* system includes the basic parts you need to add solar water heating. As with other typical solar water heating kits, no fittings or tank connections are included so soldering and technical skills are required to finish these systems.

Silver Skyline4 Drainback system includes:

1. SolarRoofs.com’s exclusive Light Weight, Easy to Install Skyline 20-01 collector (s) with Choice of Musket (dark brown or Dove (medium) gray trim colors.
2. Exclusive predrilled collector rail mount system with color coded “U” Brackets, Ell mounting brackets, washers and tec screws.
3. 10, 15 or 20 gallon Drainback tank with or without heat exchanger
4. 1 or 2 High quality 110 Volt Circulators including one high head pump for the solar side
5. Sophisticated 110 Digital Readout Differential Controller with high temperature limit
6. 1, 1/2" male low pressure Relief Valve
7. 1 Hose bib with 1/2" male thread
8. Tank combo drain valve with 3/4" female fitting.
9. 2, 1/2" compression unions plus one union body per additional stacked collector.
10. 4, 1/2" x 3/8" copper reducing adaptors
11. 2' of 3/8" copper tubing
12. Installation Manual, Operations and Maintenance Manual, Labels
13. 2 additional 10k sensors for a total of 4 digital temperature readouts.



DBI Skyline4 with 10 or 15 gallon Drainback tank with an Internal Heat Exchanger storage tank (SILVER): 20-01 collectors with 2 AC pumps (one high head and 1 small pump for the domestic water loop, digital readout differential controller, for use with any standard water heating tank.	Model #	Price
(4) 20-01 (120 ft²) (80 gallon tank recommended)	200144C DBI 10	\$4,171.00
(6) 20-01 (120 ft²) (120 gallon tank recommended)	200146C DBI 15	\$5,578.00
(8) 20-01 (160 ft²) for 4 to 6 people (240 gallons of storage recommended)	200148C DBI15	\$6,778.00

DBT Skyline4 with 10 (120 s/f) and 15 (160s/f) gallon Drainback tank for use with an internal heat exchanger (HE) storage tank (SILVER): 20-01 collectors with high head AC pump, digital readout differential controller, for use with an internal heat exchanger storage tank.	Model #	Price
(6) 20-01 (120 ft²) (120 gallon tank recommended)	200142C DBT10	\$5,147.00
(8) 20-01 (160 ft²) (240 gallons of storage recommended)	200143C DBT15	\$6,492.00
Rheem Rudd Richmond 80 Gallon 81V080HE1 tank, Delivered	81V080HE1	\$1,565.00
Rheem Rudd Richmond 120 Gallon 82V120HE1 tank, Delivered	82V120HE1	\$1,895.00
Extended Tank Warranty from 6 to 10 years, includes 2nd Anode Rod	EW10	\$142.00

Skyline4 Collector Configuration Options:		
Standard Color: Musket Brown (a dark architectural brown)	C101	\$0.00
Standard Color Option: Dove Gray (an attractive Medium Gray)	C109	\$0.00
Optional Trim Colors: Choose from one of 24 Optional Colors	CXXX	\$85.00
Tilt kits, heavy duty custom Collector Array Installation Kit, per collector:	SC01	\$50.00
Space Heating Skyline4 Options		
Tempering Valve (3/4" C x C x C)	MV01	\$98.00
2, 10 K sensors for 2 additional Differential Controller Temperature Readouts.	210K	\$40.00
Quad Flow Diverter (with 4 - 3/4" solder connections for duel tanks)	QF34	\$84.00
250° F 2" Temperature Gauge with 1/2" MPT fitting	TG01	\$38.00
Insulation: High Temperature Solid 1/2" wall for 1/2" tube X 6' long	IS12	\$9.75
Insulation: High Temperature Solid 1/2" wall for 3/4" tube X 6' long	IS34	\$13.00
Chill Chaser CC-140 with built in fan coil, pump and thermostat	CC-140	\$759.00
Honeywell 3 way valve, bottom inlet, 3/4" sweat	V8044E1	\$195.00
Honeywell 2 way valve, 3/4" sweat	V8043E1	\$195.00
Eagle 2 Controller with line cord and 2 sensors	DC02	\$228.00
Eagle Setpoint Controller with 2 sensors	SP02	\$228.00
Low Voltage Mercury Switch Thermostat (Gr) - White	2E897	\$64.00
White Rogers DPDT water heater thermostat	756-1	\$24.00
24 volt to 120 Volt relay Honeywell (Gr)	2E866	\$63.00
0-120 F bulb Thermostat - (Gr)	4MY93	\$78.00
3/4" C x C Swing Check Valve	CV34C	\$38.00
Expansion Tank # 30	ET301	\$76.00

Vacuum Breaker – ½” MPT	VB12	\$22.00
Air Vent – 1/8” MPT	AV18	\$14.00
Ball Valve ¾” C x C	BV34	\$12.00
Hose Bib ½ MPT	HB12	\$9.00
Taco 006 PU/TA - 006B - 110VAC Sweat	006BS	\$176.00
Taco 008 Pump, Bronze with 3/4" flanges	009BF	\$264.00
Taco 009 Pump, Bronze with 3/4" flanges	008BF	\$320.00

Skyline collectors can be used with the Drainback options below when the lines are sloped down to the drainback tank, the collectors are level and a Propylene Glycol mixture is used. Special drainback collectors are available.		
10 gallon Drainback Reservoir, Stainless Steel with level tube - Up to 160 s/f	DB10-SS	\$519.00
10 gallon Drainback Reservoir with 10 s/f Heat Exchanger - Up to 80 s/f	DB10-10X-SS	\$664.00
15 gallon Drainback Reservoir, Stainless Steel with level tube - Up to 320 s/f	DB15-SS	\$589.00
15 gallon Drainback Reservoir with 15 s/f Heat Exchanger - Up to 160 s/f	DB15-15X-SS	\$774.00
20 gallon Drainback Reservoir with 20 s/f Heat Exchanger - Up to 400 s/f	DB20-20X-SS	\$1,124.00
10 Gallon reservoir tank with 10 sq.ft. HX , converts any existing water heating tank into a solar water heating system. This system is just parts and requires skill to assemble: Taco 009 High Head Solar Pump (we recommended up to 24' between bottom of the drainback tank and the top of the collectors), Flange set, Bronze 003 Taco Pump 1/2" Sweat, Differential Control with Sensors (EAGLE-1) Boiler Drain	DX-R 10 Retrofit Kit	\$1,100.00
15 Gallon reservoir tank with 15 sq.ft. HX , converts any existing water heating tank into a solar water heating system. This system is just parts and requires skill to assemble: Taco 009 High Head Solar Pump (we recommended up to 24' between bottom of the drainback tank and the top of the collectors), Flange set, Bronze 003 Taco Pump 1/2" Sweat, Differential Control with Sensors (EAGLE-1) Boiler Drain	DX-R 15 Retrofit Kit	\$1,260.00
1 Gallon of Heavy Duty Pressurized loop Propylene Glycol , For down to -54 F and up to 300 F / 10 year life. Mix 50/50	PGHD	\$26.00
1 Gallon of Heavy Duty Drainback tank Propylene Glycol without additives , For down to -54 F and up to 300 F / 10 year life. Mix 50/50	PGDB	\$26.00

AIR COLLECTOR PRICE LIST

5840 Gibbons Dr. Suite G, Carmichael, CA 95608
 Phone: (888) 801-9060 (916) 481-7200 Fax: 481-7203 Email: info@SolarRoofs.com

This Price List is for Individual Components
Currently balance of system components such as fans, ducts etc.
will need to be purchased separately

Note: This price list supercedes all previous price lists - Check Web Site for Updates.

General Sizing Guidelines

Systems should be sized to have a min. of 1 sq /ft. of collector area per 20 sq/ft of floor area more in very cold climates. These collectors can be custom configured with holes cut, seals and racks supplied to fit your specific needs. 4 or 6" holes can be cut at either or both ends of the bottom and 1" x 8" air slots (with seal) can be cut at any corner. Often one collector has a cool air feed hole at one end, a slot at the far corner which matches to a slot in the next collector and back and forth as designed up to 6, 10-05 or 4, 20-05 collectors with the last collector having a hot air return hole at the far end.

Always insure that fan pulls air through collector, never pushes air through collector.



Standard Color is Musket Brown (CO101), with a Free option of Dove (Medium) Gray (C109)

(Other color options are available at an extra cost)

See other sections for tilt kits.

For Delivery Options, Please refer to page 2

Note: Fill in # of collectors

Custom lengths are available with quantity orders

Skyline Air Collectors: These high performance air collectors can be custom configured with 1" x 6" air holes in any of the 4 corners or 6" round holes in the bottom end(s) of the collector.		
10-05 Single piece unit (uncut, Includes 4 mounting ell kit)	1005#C	\$329.00
20-05 Single piece unit (uncut, Includes 6 mounting ell kit)	1005#C	\$599.00
Custom fitted air holes, Per hole includes consulting and side seals	AHC1	\$35.00
Skyline 20-05 Air Collector Configuration Options:		
Standard Color: Musket Brown (a dark architectural brown)	C101	\$0.00
Standard Color Option: Dove Gray (an attractive Medium Gray)	C109	\$0.00
Optional Trim Colors: Choose from one of 24 Optional Colors	CXXX	\$85.00
Air Collector Tilt kits , heavy duty custom Collector Array Installation Kit, per collector:	SC01	\$70.00
Wall Duct Kit with 5' long x 4" flex ducting 4" to 3" reducer and louvered wall duct (Gr):	5C106	24.00
4" insulated flexible duct x 25' long	3TR11	76.00
4" Adjustable Plastic Grill	RSK4	22.00
4" back draft damper	RSK4	34.00
4" 90 cfm Centrifugal in-line duct fan	6C509	250.00
6" 190 cfm Centrifugal in-line duct fan	3TJ96	280.00
Eagle Setpoint Controller with 2 sensors	SP02	\$228.00
Low Voltage Mercury Switch Thermostat (Gr) - White	2E897	\$64.00
24 volt to 120 Volt relay Honeywell (Gr)	2E866	\$63.00
0-120 F bulb Thermostat - (Gr)	4MY93	\$78.00

SPECIALIZED GLAZED POOL COLLECTOR PRICE LIST

5840 Gibbons Dr. Suite G, Carmichael, CA 95608
 Phone: (888) 801-9060 (916) 481-7200 Fax: 481-7203 Email: info@SolarRoofs.com

This Price List is for Individual Components
Currently balance of system components such as pumps, fittings etc. will need to be purchased separately

This high performance Specialized Pool Collector is for Coastal and other areas where the average summer temperature is below the desired pool temperature. It is not recommended for hot areas such as AZ where stagnation would occur for long periods of time.

This Drainback collector has 1/2" nominal (5/8"OD) tubes at either end to connect the needed header size to. A 20-06 has one and a 40-06 will have 2.

Note: This price list supercedes all previous price lists - Check Web Site for Updates.

General Sizing Guidelines



Average percentage of collector area to pool surface area coverage is generally 70% as recommended by the manufacturer. A south facing 50% coverage will generally give one to three additional months of pool usage at each end of the season. Some customers have requested pool systems with as little as 25% coverage with good results for their needs.



These new glazed pool collectors are designed to heat pools when ambient temperatures are below the desired pool temperature by up to 60 F. It limits temperature, probably topping off at 270 F instead of over 400 F like conventional 40 s/f collectors. The Black Crystal absorber increases low-end performance. About 50 to 80% of pool area is needed in collector area depending on needs.

30, 40-06 collectors for a 1,200 s/f system

Standard Color is Musket Brown (CO101), with a Free option of Dove (Medium) Gray (C109)

(Other color options are available at an extra cost)
 See other sections for tilt kits.

For Delivery Options, Please refer to page 2

Note: Fill in # of collectors

Skyline Glazed Pool Collectors: These high performance copper pool collectors come with 1/2" feed and return lines protruding ~ 1 1/2' out from the ends. The back of the collector has 1/2" of insulation.		
20-06 Single piece unit (Includes 6 mounting ell kit)	2006#C	\$580.00
40-06 Single piece unit (Includes 6 mounting ell kit)	4006#C	\$1,040.00

SolarRoofs.com System Components and Parts

Note: Other Pumps, PV Panels and Options are available on request.

Retail Kit (specify system) 50' roll of 1/2" OD / 3/8" ID copper, 2 compression unions, 2 compression ells, 25' # 18 wire, O and M and Installation manuals (NO PUMP)	RK01	\$160.00
"Quick Connect" Kit: open loop system connection, replaces tank drain. Assembly with floating check valve, isolation valves, 3 drain hose bibs, 1/2" ID copper stub on return and feed side (NO PUMP)	QC01	\$225.00
"Top Connect" Kit: Same as QC01 but connects to top of tank Same as QC01 but connects to top of tank	TC02	\$190.00
"External Heat Exchanger" Kit (add 2 pumps required and not included) Pumped heat exchanger assembly with 1 floating check valves, charging hose bibs with isolation valve and expansion tank, set up for 1/2" nominal copper	QRK1	\$620.00
80 Gallon Heat Exchange Kit Full connections for the 80 gallon Rheem / Rudd heat exchanger, pre-assembly with (1) floating check valve, charging hose bib ports with isolation valve, pressure gauge, expansion tank	HE80	\$325.00
1 Gallon of Heavy Duty Propylene Glycol , For down to -54 F and up to 300 F / 10 year life, check at 5 years. Mix 50/50	PGHD	\$26.00
50 foot roll of 3/8" ID, 1/2" OD soft copper tubing	TR50	\$98.00
Insulation: High Temperature Solid 1/2" wall for 1/2" tube X 6' long	IS12	\$9.75
Insulation: High Temperature Solid 1/2" wall for 3/4" tube X 6' long	IS34	\$13.00
Taco 006B4 110V Bronze Circulator (C x C)	TC01	\$186.00
Taco 008BF 110V Bronze Circulator with 3/4" flanges	TC08	\$288.00
Taco 009F 110V High Head Iron Circulator with 3/4" flanges (up to 22')	TC09	\$298.00
Laing D5 12V - 24 V Circulator , requires minimum 22 watt PV for full power	D571	\$266.00
Laing D5 12V "Strong Circulator , requires min 55 watt PV for full power	D572	\$276.00
March 809 18 Watt 12V Circulator	HC18	\$265.00
10 Watt 12V Framed Panel	PV10	\$120.00
15 Watt 12V Framed Panel	PV15	\$160.00
20 Watt 12V Framed Panel	PV20	\$220.00
30 Watt 12V Framed Panel	PV30	\$360.00
35°F Freeze "Dole" Valve (Starts to drip water at 40F – 3/4" thread)	FV35	\$145.00
45°F Freeze "Dole" Valve (Starts to drip water at 40F – 3/4" thread)	FV45	\$145.00
40°F Freeze Snap Switch closes at 40 F - FS02 (12 Volt - use with transformer)	FS02	\$55.00
180°F High Temperature snap switch (place on cold in) Opens at 180°F, Closes at 140°F	H180	\$22.00
110°F Normally Closed snap switch (place in collector hot out) For use with gas water heaters to prevent heat loss during cool mornings, closes at 110°F, & opens at 90°F	S110	\$32.00
250° F 2 1/2" Temperature Gauge (with 1/2" brass tee and adaptor)	TG01	\$38.00
Digital Twin Temperature Readout with sensors, tape, and spare set of batteries	DTT1	\$128.00
Differential Control 110 Volt Eagle 2 with 2 Digital readout, 2 sensors, line cord & recirculation option	DC02	\$228.00
Differential Control 12 Volt Eagle 2 with 2 Digital readout, 2 sensors, Requires transformer for recirculation option	DC04	\$238.00
12-16 volt transformer with 2 diodes for recirculation freeze protection	T121	42.00
10 K differential Control sensors	D10K	20.00
Differential Control (12 Volt DTC-1 with sensors)	DC06	\$115.00
150 Pound Pressure Relief Valve (Adjustable) - 1/2" male	PR15	\$38.00
Floating Ball Check Valve with 1/2" MPT (threads at both ends)	CV01	\$36.00
Air Vent (specify 1/8" or 1/4" male thread)	AV01	\$25.00
Tempering Valve (3/4" C x C x C)	MV01	\$98.00
Tempering Valve (3/4" female thread)	MV04	\$128.00

Quad Flow Diverter (with 4 - 3/4" solder connections for dual tanks)	QF34	\$94.00
80 Gallon Heat Exchanger Tank (required for SRCC rating) Price includes delivery to the 48	81V080HE1	\$1,565.00
120 Gallon Heat Exchanger Tank Price includes delivery to the 48	81V120HE1	\$1,895.00
Extended Tank Warranty from 6 to 10 years , includes 2 nd Anode Rod	EW10	\$142.00
80 Gallon 4 Top Port Solar Tank	TC80FL	\$896.00
120 Gallon 4 Top Port Solar Tank	TC120FL	\$1,096.00
Skyline collectors can be used with the Drainback options below when the lines are sloped down to the drainback tank, the collectors are level and a Propylene Glycol mixture is used. Special drainback collectors are available.		
10 gallon Drainback Reservoir in Stainless Steel with level tube	DB10-10X-SS	\$519.00
10 gallon Above Drainback Reservoir with 10 s/f Heat Exchanger	DB10-SS	\$664.00
15 gallon Drainback Reservoir in Stainless Steel with level tube	DB15-SS	\$589.00
15 gallon Above Drainback Reservoir with 15 s/f Heat Exchanger	DB15-15X-SS	\$774.00
20 gallon Drainback Reservoir with 20 s/f Heat Exchanger - Up to 400 s/f	DB20-20X-SS	\$1,124.00
10 Gallon reservoir tank with 10 sq.ft. HX , converts any existing water heating tank into a solar water heating system. This system is just parts and requires skill to assemble: Taco 009 High Head Solar Pump (we recommended up to 24' between bottom of the drainback tank and the top of the collectors), Flange set, Bronze 003 Taco Pump 1/2" Sweat, Differential Control with Sensors (EAGLE-1) Boiler Drain	DX-R Retrofit Kit	\$1,100.00
15 Gallon reservoir tank with 15 sq.ft. HX , converts any existing water heating tank into a solar water heating system. This system is just parts and requires skill to assemble: Taco 009 High Head Solar Pump (we recommended up to 24' between bottom of the drainback tank and the top of the collectors), Flange set, Bronze 003 Taco Pump 1/2" Sweat, Differential Control with Sensors (EAGLE-1) Boiler Drain	DX-R Retrofit Kit	\$1,260.00

Terms: Full payment upon order. Shipping is usually within 10 business days on standard orders but seasonal variations may effect delivery times. Please let us know if you need a quote for expedited shipments.

Notes: Special arrangements and discounts can be made for volume purchases with variations to best suite your needs. Custom collectors, including especially attractive flush mount collectors including a full-length flashing and mounting rail with the feed and return out of the bottom of the collector are available. **PLEASE Check Web Site for Monthly updates. All prices and specifications are subject to change without notice.**

SolarRoofs.com ORDER / INVOICE FORM Dealer: _____ Order # _____

Phone: (916) 481-7200 Fax: 481-7203 Web: www.SolarRoofs.com Email: Info@SolarRoofs.com

Mail to: SolarRoofs.com 5840 Gibbons Dr. Suite G, Carmichael, CA 95608 Nov 1, 2008

Name: _____ Date: _____
 Billing Address: _____ City: _____ State: _____ Zip: _____
 Shipping Address: _____ City: _____ State: _____ Zip: _____
 Phone # _____ Fax # _____ Cell: _____
 Email: _____ Other Instructions: _____

The length of my pipe run (collector to tank) is: _____ Feet

My water heater is: Electric ___ Gas ___ Propane ___ Oil ___

people in home _____ Lowest Temperatures _____ F.

Adding solar storage? ___ Yes _____ Gallons ___ No *

*Existing Storage Gal. _____ / Re-circulation Yes: ___ No: ___

8" Clearance in front of storage tank? ___ Yes ___ No

Type of Roof _____

Orientation of Roof to South _____° Pitch _____°

Mounting System: Stacked _____ Side by Side _____

Tilt: _____ Degree: _____ Other: _____

Color: Musket ___ Dove Gray ___ Optional: _____

Notes: _____

Note: System Number = X001 (+ system # if any) + number of collectors (C), or System Type then number of collectors
 Example: 2 1001 Collector only: 10012C,

System: _____ 01 _____ C _____	
_____ @ \$ _____	\$ _____
_____ @ _____	\$ _____
_____ @ _____	\$ _____
_____ @ _____	\$ _____
_____ @ _____	\$ _____
_____ @ _____	\$ _____
_____ @ _____	\$ _____
_____ @ _____	\$ _____
_____ @ _____	\$ _____
TOTAL Before Tax:	\$ _____
CA Tax (Total X .07xx):	\$ _____
BOXING:	\$ _____
SHIPPING:	\$ _____

BALANCE TOTAL with Tax (if required): \$ _____

✓ Check made out to **SolarRoofs.com** Enclosed: _____ Being Mailed: _____

CHARGE TO MY: MASTERCARD VISA AMERICAN EXPRESS

CARD # _____ EXP. DATE ___ / ___

You have my permission to charge my card for the above total.

Signature or Verified By Order Taker: _____ (Verify Card address and Zip Code)

Return Policy: Check Shipment upon arrival, refuse if damaged. Customer must file claim for damage if accepted. 85% materials refund will be made upon return of the complete system in good condition, with shipping prepaid to the factory, within 10 days of shipment arrival. Company will cover shipping if there is a factory defect not related to shipping.

Thank you for your order! Your installation help number for any questions you have is: **888-801-9060**. You are now on your way to receiving a truly great product value which will Benefit your family and the environment for many years to come! Please "Spread the Word" and Help Achieve a "Million Solar Roofs" as soon as possible, after all, what the Environment needs are tens of millions of Solar Roofs!

Approved by: _____