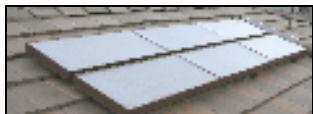


“Skyline”

System Configuration & System(s) Price List
5840 Gibbons Dr. Suite H, Carmichael, CA 95608
Phone: (888) 801-9060 (916) 481-7200 Fax: (916) 481-7203
Info@SolarRoofs.com
June 5, 2008



Note: This price list supercedes all previous price lists - Check Web Site for Updates.

INDEX – Note all systems with “Skyline” collectors Qualify for 2008 30% Federal Tax Credit

System Overview and Defaults	Page 1
Delivery	Page 2
System Configurations (in order of popularity)	Pages 3 - 13
Tropical – No freeze or temperatures ever below 45°F	Pages 3 - 6
 Premium System 3 – SRCC rated, uses a 12 volt PV powered pump. Value System 1 – Uses a 12 volt pump, 15 volt transformer and 110F collector snap switch.	
Temperate – Prices for all Temperate systems shown include Recirculation Freeze Protection for light freeze temperatures down to 30°F, No Hard Freeze	Pages 7 - 9
 Premium System 3 – SRCC rated, 12 volt PV powered pump, includes FV04 or FV05 passive freeze valve. Value System 2 – 110 volt pump and differential control, has FV04 or FV05 passive freeze valve options*. Value System 1, 2 and 3 can have very light freeze protection using FV04 or FV05 passive freeze valve option. *Value System 2 with 110 volt pump and differential control can be used as a tropical system.	
Freeze – Areas with Hard Freeze (or areas with bad water requiring closed loop):	Pages 10 - 12
 Premium System 5 – SRCC rated closed loop (requires 81V080HE1 tank), uses a 12 Volt PV powered pump. Value System 4 – Freeze closed loop uses a 110 volt pump, and differential controller.	
System Options (Including SSC1 Side by Side option, Tilt Kits, Colors, Etc...)	Page 13
Collector and Component Price List	Page 14
Collector Options and Tank Top Connect Price List	Page 15
System Components and Parts	Page 16
Order Form	Page 17

Please Note:

Premium SRCC OG-300 Certified “Skyline” Systems 3 and 5 are **100% RUN BY THE SUN** and come standard with PV Pumped solar loop, roll of copper, Tempering valve, splash guard, Solar Loop Temperature Gauges and special OG-300 Labeling.

Value systems 1, 2 and 4 have the same Premium “Skyline” SRCC OG-100 Certified collectors and parts as Premium systems 3 and 5 but do not come with roll of copper, Tempering valve, splash guard, Solar Loop Temperature Gauges and special OG-300 Labeling. Systems 2 and 4 are 110 Volt and come with a high quality Differential control with collector and tank bottom temperature readouts.

All “Skyline” systems are Powerful, Durable and Attractive Systems that are Significantly More Complete as well as Much Easier and Safer to Install than Conventional Solar Thermal Systems.

These are Important Points which give “Skyline” systems important advantages over all competition. Not just different, but a truly better value.

System Overview and Defaults

Both the 10-01 and 20-01 Collectors are OG-100 Certified and qualify for Federal Tax Credits*

There are a great variety of needs by different customers and we have attempted to give the greatest flexibility with the following systems and pricing.

All Open Loop systems (1-3) are designed to be installed with the existing or an added standard water heating tank and have a bottom (standard and optional top connect).

Closed Loop systems 4 and 5 REQUIRE a heat exchange tank to use along with or replace the existing tank. For the OG-300 rating, it must be a Rheem Heat

Exchanger tank.

Systems should be sized to have a minimum of 1 gallon of storage per each square foot of collector area, 1.5 or 2 gallon of storage per each square foot of collector area is recommended.

For any system: Two (2) 10-01 collectors can be substituted for One (1) 20-01 collector. For systems 3 and 5, this substitution also qualifies for OG-300.*

Rails and mounting kits are included with all systems.

*The Solar Rating and Certification Corporation provides certification programs and national rating standards for solar energy equipment. The OG-100 (collector) & OG-300 (system) certified collectors and systems qualify for the 30% Federal Tax Credit.

System Code Explanation

Example: Collector Model X001YZC50

X = 1001 or 2001 (10 or 20 s/f collectors, series 01)

Y = System, 1, 2, 3, 4, or 5 (if for collectors only, this number is skipped)

Z = Quantity of collectors; where **Z**, for residential, = 1 through 4 (20-01), 1 through 8 (10-01), or any number for commercial.

C = Collectors **50** = The SRCC Rated Capacity of Water Heater, usually 50 or 80 gallons.

Separated by a dash or slash, all Numbers and Letters following the system code are Options and are usually listed in groups of 4 to 6. EXAMPLE: SSC1 = Optional **S**ide by **S**ide Collector Array Installation Kit.

Yellow Highlight = Our most popular Systems and Options

SolarRoofs.com can help you customize your systems

Skyline System Defaults**

- Musket Brown (C101) is the Standard Color (Free Medium Dove Gray (C109) color option also available)
- Stacked Flush Mount Rail system (MR#C) for stacked collector array installation kit (SC01)

STANDARD Example: 200132C would be a System 3 with 2 Musket 20-01 collectors stacked with 3 rails.

A Side by Side Option (SSC1) applies for even numbers of collectors only \$60.00 extra.



at

4 Side by Side 10-01 = 40 s/f

Example: 100112C-SSC1 or 200112C-SSC1 would be (2) 10-01 or (2) 20-01 collectors, System 1 with Side by Side Install Option. The 10-01 kit would be supplied with (4) full single collector mounting rails and hardware, (2) for each 10-01 collector. The 20-01 kit would be supplied with (6) full single collector mounting rails and hardware, (3) rails for each collector.

- **No Soldering is needed for all Standard Solar Loops yet it may be required for tank installation, and will be required for installing the standard tempering valve (included with the system 3 (20 s/f +) and system 5) to the tank. See: System Tempering Valve Options page 7.**
- **Except for copper tubing (50' of 3/8" ID, 1/2" OD copper tubing is included with systems 3 and 5 ONLY), ALL solar loop components and connections are included with system kits.**

****Unless otherwise designated. These are not listed on the order.**

Configurations are Determined by whether you have a Tropical, Temperate, or Freeze Climate as well as Desired Options such as PV, Tilt, Color, Etc...

DELIVERY

Your shipping delivery preference can help determine collector size.

You can call us for a quote or use the following

10-01



The 10-01 collector is usually shipped by **FedEx Ground (upon request we can also ship via UPS)**, which is usually the most cost effective way to ship up to four (4) 10-01 collectors.

Add Packaging: \$30 for boxing the first collector and \$15 per collector over 1, each boxed 10-01 collector is 26 pounds, 74" long x 22" wide x 5" high. Add 4' in height per collector over 1.

For a System: Add \$20.00 for boxing the components: 24" x 24" x 12." System box weight is about 35 lb.

<http://www.fedex.com/us/ground/main/?link=4>

20-01



The 20-01 collectors always requires **FedEx Freight** delivery and usually costs the least for 60 S/F or more. Due to shipping costs we recommend a **MINIMUM** of (2) 20-01 collectors via **FedEx Freight**.

Fill out the rates section: 2 collectors = 250 pounds. Add 50 lbs per collector over the first two. Use a 63% discount and **Class 77.5** for shipments to the 48.

Add Packaging: First two collectors: \$120.00 and \$20 per each additional collector over two.

For a System: Add \$20.00 for boxing the components: 24" x 24" x 12." System box weight is about 35 lb.

**If not a business Freight delivery, add \$72.00 for home delivery
(Residential businesses are considered a home delivery)**

<http://www.fedex.com/us/freight/main>

**Two (2) 10-01 collectors can be substituted for One (1) 20-01 collector & Visa Versa
Up to 4, 10-01 Collectors are Generally Less Expensive To Ship than 2, 20-01 Collectors**

Premium System 3 – 12 Volt PV Tropical Climate Systems

System 3 is Solar Rating and Certification Corporation (SRCC) “OG-300” System and FSEC Certified (It qualifies for the 30% Federal Tax Credits as well as State and Utility Rebates)

“Open Loop” Tropical Systems are good for the Florida Keys, Caribbean, Hawaii and all areas with Absolutely No Freeze or temperatures below 40°F. Storage Tank Not Included

SRCC OG-300 and FSEC System Rated - Qualifies for all Tax Credits and Rebates

Premium System 3 is 100% Run by the Sun! It has a 12 Volt circulator that is powered by a Photovoltaic Panel, It is for use in areas with no freeze or very light freeze. This system circulates potable water through the collectors and then returns the solar heated water into the storage tank. The standard configuration used a "Quick Connect" that replaces the drain at the bottom of the tank with a "coaxial" fitting. This fitting allows the solar collector's feed and return line to share the same hole. Returning solar heated water goes through a center tube into the tank. The warmer solar heated water immediately rises and at the same time cool water is being sucked by the solar pump through the space around the hot return tube. This system is so complete, it even includes **FREE!** 36' of High Temperature insulation!

Tropical Open Loop System 3 Features:

Skyline Premium: The Most Complete Solar Water Heating System Kits in the World!

- 12 Volt Pump with Photovoltaic Panel
- Light Weight, Easy to install collectors with all copper high performance absorbers
- Complete "Easy Mount" rail system
- Digital Twin Temperature Readout with sensors, tape, and spare set of batteries
- All solar Loop Parts and Fittings including pre-soldered assemblies
- 50' roll of soft copper tubing with compression unions and Ells
- FREE!** 36' of 1/2" wall high temperature insulation
- Tempering Valve (3/4" C x C x C) also no solder Tempering Valve options
- No Soldering Required for the entire solar Loop
- "Quick Connect" to bottom of tank or optional Top Connects available
- FREE!** Option: Choice of "Stacked" or "Side by Side" collector layouts
- Choice of 2 Standard and 24 Optional Collector Trim Colors
- A choice of options to make the system just right for you

Tropical System 3 Parts List - SO COMPLETE!:

10 or 20 sq. ft solar thermal collector(s), 20" wide x 6' or 12' long • Rail flush mounting kit with lags • System dependent 12 volt Laing, ElSid or March circulation pump • 5, 10 or 20 watt PV panel with 25' of wire • 50' roll of 1/2" OD soft copper • Compression unions • Lag screws • Washers • Tec screws • **FREE** 36' of 1/2" wall high temp insulation • "Quick Connect" Kit for existing or added water heater with shut off and drain valves • Floating ball check valve ("Bottom Connect" is standard, "Top Connect" (TC04) is available at \$195.00 extra charge) • Solar Loop Pressure Relief Valve (PRV) with splash guard • Air vent with pre-soldered assembly • Temperature gauges • Tempering valve (20 s/f and above) • Special OG-300 labeling • Installation and Owner's Manuals.

Not Supplied: Storage Tank (Except with TC80FL option), water side plumbing.

Tropical System 3:	Model #	Price
(2) 10-01 (20 ft ²) for 1 to 2 people, requires a 50 gallon tank	100132C50	\$1,675.00
(3) 10-01 (30 ft ²) for 3 to 4 people, requires a 50 gallon tank	100133C50	\$1,945.00
(4) 10-01 (40 ft ²) for 3 to 5 people, requires a 50 gallon tank	100134C50	\$2,215.00
(4) 10-01 (40 ft ²) for 3 to 5 people, requires a 80 gallon tank	100134C80	\$2,215.00
(6) 10-01 (60 ft ²) for 5 to 7 people, requires a 50 gallon tank	100136C50	\$2,755.00
(6) 10-01 (60 ft ²) for 5 to 8 people, requires a 80 gallon tank	100136C80	\$2,755.00

System 3 Collector Configuration Options:		
Standard Color: Musket Brown (a dark architectural brown)	C101	\$0.00
Standard Color Option: Dove Gray (an attractive Medium Gray)	C109	\$0.00
Optional Trim Colors: Choose from one of 24 Optional Colors	CXXX	\$85.00
Stacked Collector Array Installation Kit (default):	SC01	\$0.00
Side by Side Collector Array Installation Kit (End to End Option for Even Numbers of Collectors only):	SSC1	\$0.00
Substitute One (1) 20-02 collector for every Two (2) 10-01 collectors - Minimum 2, 20-01 collectors, requires special crating and shipment by freight, call factory.	SU20	\$0.00
TC80FL 80 Gallon Top Connect - Free Delivery in Florida Only:		
(4) 10-01 (40 ft²) or 2, 20-01 for 3 to 5 people	100134CTC80	\$2,771.00
(6) 10-01 (60 ft²) or 3, 20-01 for 5 to 7 people	100136CTC80	\$3,271.00
Light Freeze Valve Option: Use if there is any possibility of temperatures below 38 F.		
For Standard Stacked mounting system	FV04	\$118.00
For Optional SSC1 Side by Side mounting system	FV05	\$126.00

Tropical System 3 Options:		
Additional 50 foot roll of 3/8" ID, 1/2" OD soft copper tubing	TR50	\$98.00
Solar Top Connect with Tempering Valve (for flex connect to water side)	TC04	\$195.00
Top Tempering Valve Assembly - use with bottom connect or 4 port solar tank, for flex connect to water side, pre-soldered for easy installation	MVT2	\$135.00
180°F High Temperature snap switch (place on cold in) Opens at 180°F, Closes at 140°F	H180	\$22.00
110° F Normally closed snap switch (S110 is used with gas water heaters to prevent heat loss during cool mornings) (Closes at 110° F, Opens at 90° F, place in the collector hot out)	S110	\$32.00
Quad Flow Diverter (with 4 - 3/4" solder connections for duel tanks)	QF34	\$84.00
Extra Digital Twin Temperature Readout with sensors, tape, and spare set of batteries	DTT1	\$78.00
250° F 2" Temperature Gauge with 1/2" MPT fitting	TG01	\$38.00
Insulation: High Temperature Solid 1/2" wall for 1/2" tube X 6' long	IS12	\$9.75
Insulation: High Temperature Solid 1/2" wall for 3/4" tube X 6' long	IS34	\$13.00

Value System 1 - Open Loop 12 Volt, Tropical Climate

Qualifies for Federal Tax Credit under SRCC OG-100 - Not SRCC OG-300 Certified

Value System 1 has a sophisticated 12 Volt Electronic Circulator controlled by a 110 degree F snap switch placed in the collector and is powered by a transformer. PV Power options are available. System 1 is for use in areas with no freeze or very light freeze with the Dole Freeze valve option. This system circulates potable water through the collectors and then returns the solar heated water into the storage tank. The standard configuration used a "Quick Connect" that replaces the drain at the bottom of the tank with a "coaxial" fitting. This fitting allows the solar collector's feed and return line to share the same hole. Returning solar heated water goes through a center tube into the tank. The warmer solar heated water immediately rises and at the same time cool water is being sucked by the solar pump through the space around the hot return tube.

Tropical System 1 Features:

- 12 Volt Pump
- Light Weight, Easy to install collectors with all copper high performance absorbers
- Complete "Easy Mount" rail system including lags
- All solar Loop Parts and Fittings Included except tubing
- No Soldering Required for the entire solar Loop
- "Quick Connect" to bottom of tank or optional Top Connects available
- Choice of "Stacked" or "Side by Side" collector layouts
- Choice of 2 Standard and 24 Optional Collector Trim Colors
- A choice of options to make the system just right for you

Tropical System 1 Parts List:

10 or 20 sq. ft solar thermal collector(s), 20" wide x 6' or 12' long • 110°F snap switch (S110) with transformer • Rail flush mounting kit • System dependent 12 Volt Laing, EISid or March circulation pump • Compression unions • Lag screws • Washers • Tec screws • 6' Section of high temp insulation • "Quick Connect" Kit for existing or added water heater with shut off and drain valves • Floating ball check valve ("Bottom Connect" is standard, "Top Connect" (TC02) is available at \$60.00 extra charge) • Solar Loop Pressure Relief Valve (PRV) • coin vent with pre-soldered assembly • labeling • Installation and Owner's Manuals.

Not

Supplied: Storage Tank, 50' roll of copper tubing, water side plumbing, Tempering valve, Temperature Readout.

Tropical Open Loop System 1:	Model #	Price
(1) 10-01 (10 ft²) – Cabin / Boat / Motor-Home	100111C	\$995.00
(2) 10-01 (20 ft²) for 1 to 2 people	100112C	\$1,295.00
(3) 10-01 (30 ft²) for 3 to 4 people	100113C	\$1,545.00
(4) 10-01 (40 ft²) for 3 to 5 people	100114C	\$1,795.00
(5) 10-01 (50 ft²) for 4 to 6 people	100115C	\$2,045.00
(6) 10-01 (60 ft²) for 5 to 7 people	100116C	\$2,295.00
(8) 10-01 (80 ft²) for 6 to 10 people, SSCI Only	100118C	\$2,795.00

System 1 Collector Configuration Options:		
Standard Color: Musket Brown (a dark architectural brown)	C101	\$0.00
Standard Color Option: Dove Gray (an attractive Medium Gray)	C109	\$0.00
Optional Trim Colors: Choose from one of 24 Optional Colors	CXXX	\$85.00
Stacked Collector Array Installation Kit (default):	SC01	\$0.00
Side by Side Collector Array Installation Kit (End to End Option for Even Numbers of Collectors):	SSC1	\$30.00
Substitute One (1) 20-02 collector for every Two (2) 10-01 collectors - Minimum 2, 20-01 collectors, requires special crating and shipment by freight, call factory.	SU20	\$0.00

Tropical System 1 Options:		
10 Watt PV for Up to 60 s/f of collectors, deletes transformer	PV10	\$160.00
20 Watt PV for 80 s/f of collectors, deletes transformer	PV20	\$260.00
10 Watt PV for Up to 60 s/f of collectors, FOR GAS with 110 F Snap Switch (S110 is used with gas water heaters to prevent heat loss during cool mornings - Closes at 110° F, Opens at 90° F, place in the collector hot out) - deletes transformer	PV1G	\$212.00
20 Watt PV for 80 s/f of collectors, FOR GAS with 110 F Snap Switch (S110 is used with gas water heaters to prevent heat loss during cool mornings - Closes at 110° F, Opens at 90° F, place in the collector hot out) - deletes transformer	PV2G	\$292.00
50 foot roll of 3/8" ID, 1/2" OD soft copper tubing	TR50	\$98.00
Tempering Valve (3/4" C x C x C)	MV01	\$98.00
Solar Top Connect without Tempering Valve (for flex connect to water side)	TC02	\$60.00
Solar Top Connect with Tempering Valve (for flex connect to water side)	TC03	\$245.00
Top Tempering Valve Assembly - use with bottom connect or 4 port solar tank, for flex connect to water side, pre-soldered for easy installation	MVT1	\$185.00
180°F High Temperature snap switch (place on cold in) Opens at 180°F, Closes at 140°F	H180	\$22.00
110° F Normally closed snap switch (S110 is used in the collector with gas water heaters to prevent heat loss during cool mornings - Closes at 110° F, Opens at 90° F, place in the collector hot out)	S110	\$32.00
Quad Flow Diverter (with 4 - 3/4" solder connections for duel tanks)	QF34	\$84.00
Digital Twin Temperature Readout with sensors, tape, and spare set of batteries	DTT1	\$78.00
250° F 2" Temperature Gauge with 1/2" MPT fitting	TG01	\$38.00
Insulation: High Temperature Solid 1/2" wall for 1/2" tube X 6' long	IS12	\$9.75
Insulation: High Temperature Solid 1/2" wall for 3/4" tube X 6' long	IS34	\$13.00
Light Freeze Valve Option: 45°F to start opening, Dole 45 kit includes all fittings for light freeze protection to 30°F.		
For Standard Stacked mounting system	FV04	\$118.00
For Optional SSC1 Side by Side mounting system	FV05	\$126.00

Temperate Climate Open Loop Systems

Temperate Climate

Includes light freeze protection for all Open Loop Systems. Good for Central Florida, Southern California and other areas where the temperature rarely goes down to 30°F **with NO Hard Freeze.**

Premium System 3 - Open Loop SRCC OG-300 Certified

Ideal for Florida, Southern California, and similar climate systems **includes an FV04 or FV05 Passive Freeze Valve with Fittings, and FS03 Re-circulation kit for Light Freeze Protection.**

This Configuration is designated as F3 Storage Tank water side plumbing not supplied.

Premium System 3 is 100% Run by the Sun! It has a 12 Volt circulator that is powered by a Photovoltaic Panel, It has 2 forms of light freeze protection and is for use in areas with light freeze. This system circulates potable water through the collectors and then returns the solar heated water into the storage tank. This system circulates potable water through the collectors and then returns the solar heated water into the storage tank. The standard configuration used a "Quick Connect" that replaces the drain at the bottom of the tank with a "coaxial" fitting. This fitting allows the solar collector's feed and return line to share the same hole. Returning solar heated water goes through a center tube into the tank. The warmer solar heated water immediately rises and at the same time cool water is being sucked by the solar pump through the space around the hot return tube.

This system is so complete, it even includes **FREE!** 36' of High Temperature insulation!

Temperate System 3 Features:

"Skyline" Premium: The Most Complete Solar Water Heating System Kits in the World!

12 Volt Pump with Photovoltaic Panel

Light Weight, Easy to install collectors with all copper high performance absorbers

Complete "Easy Mount" rail system

Dole Freeze Valve that opens at 45 degree F for very light Freeze Protection

Recirculation Freeze Protection Standard - 12 Volt Freeze Snap Switch

Control Box with Transformer

Digital Twin Temperature Readout with sensors, tape, and spare set of batteries

All solar Loop Parts and Fittings including pre-soldered assemblies

50' roll of soft copper tubing with compression unions and Ells

FREE! 36' of 1/2" wall high temperature insulation

Tempering Valve (3/4" C x C x C) also no solder Tempering Valve options

No Soldering Required for the entire solar Loop

"Quick Connect" to bottom of tank or optional Top Connects available

FREE! Option: Choice of "Stacked" or "Side by Side" collector layouts

Choice of 2 Standard and 24 Optional Collector Trim Colors

No soldering is required for the solar loop

A choice of options to make the system just right for you

Temperate System 3 Parts List - SO COMPLETE!:

10 or 20 sq. ft solar thermal collector(s), 20" wide x 6' or 12' long • Rail flush mounting kit with lags • System dependent 12 volt Laing, EISid or March circulation pump • 5, 10 or 20 watt PV panel with 25' of wire • Dole Freeze Valve with fittings that opens at 45 degree F • Recirculation Freeze Protection with 12 Volt Freeze Snap Switch Control Box with Transformer and wiring • 50' roll of 1/2" OD soft copper • Compression unions • Lag screws • Washers • Tec screws • 36' of 1/2" wall high temp insulation • "Quick Connect" Kit for existing or added water heater with shut off and drain valves • Floating ball check valve ("Bottom Connect" is standard, "Top Connect" (TC04) is available at \$195.00 extra charge) • Solar Loop Pressure Relief Valve (PRV) with splash guard • Air vent with pre-soldered assembly • Temperature gauges • Tempering valve (20 s/f and above) • Special OG-300 labeling • Installation and Owner's Manuals.

Not Supplied: Storage Tank (Except with TC80FL option), water side plumbing. This Configuration is designated as F3

Temperate Climate System 3:	Model #	Price
(2) 10-01 (20 ft ²) for 1 to 2 people, requires a 50 gallon tank	100132C50F3	\$1,948.00
(3) 10-01 (30 ft²) for 3 to 4 people, requires a 50 gallon tank	100133C50F3	\$2,198.00
(4) 10-01 (40 ft ²) for 3 to 5 people, requires a 50 gallon tank	100134C50F3	\$2,478.00
(4) 10-01 (40 ft²) for 3 to 5 people, requires a 80 gallon tank	100134C80F3	\$2,478.00
(6) 10-01 (60 ft ²) for 5 to 7 people, requires a 50 gallon tank	100136C50F3	\$2,995.00
(6) 10-01 (60 ft ²) for 5 to 8 people, requires a 80 gallon tank	100136C80F3	\$2,995.00
Included Dole Valve for Standard SC01 Stacked mounting system	FV04	\$0.00
included Dole Valve for Optional SSC1 Side by Side mounting system	FV05	\$0.00
Included Freeze Snap Switch Control Box with Transformer, Switch, Diodes and Wire	FS03	\$0.00

Collector Configuration Options:

Standard Color: Musket Brown (a dark architectural brown)	C101	\$0.00
Standard Color Option: Dove Gray (an attractive Medium Gray)	C109	\$0.00
Optional Trim Colors: Choose from one of 24 Optional Colors	CXXX	\$85.00
Stacked Collector Array Installation Kit (default):	SC01	\$0.00
Side by Side Collector Array Installation Kit (End to End Option for Even Numbers of Collectors):	SSC1	\$0.00
Substitute One (1) 20-02 collector for every Two (2) 10-01 collectors - Minimum 2, 20-01 collectors, requires special crating and shipment by freight, call factory.	SU20	\$0.00

TC80FL 80 Gal Top Connect - Free Delivery in Florida Only

(4) 10-01 (40 ft ²) or 2, 20-01 for 3 to 5 people	100124CTC80	\$2,995.00
(6) 10-01 (60 ft ²) or 3, 20-01 for 5 to 7 people	100126CTC80	\$3,495.00

System 3 Options

Additional 50 foot roll of 3/8" ID, 1/2" OD soft copper tubing	TR50	\$98.00
Solar Top Connect with Tempering Valve (for flex connect to water side)	TC04	\$195.00
Top Tempering Valve Assembly - use with bottom connect or 4 port solar tank, for flex connect to water side, pre-soldered for easy installation	MVT2	\$135.00
180°F High Temperature snap switch (place on cold in) Opens at 180°F, Closes at 140°F	H180	\$22.00
110° F Normally closed snap switch (S110 is used with gas water heaters to prevent heat loss during cool mornings) (Closes at 110° F, Opens at 90° F, place in the collector hot out)	S110	\$32.00
Quad Flow Diverter (with 4 - 3/4" solder connections for duel tanks)	QF34	\$84.00
Digital Twin Temperature Readout with sensors, tape, and spare set of batteries	DTT1	\$78.00
250° F 2" Temperature Gauge with 1/2" MPT fitting	TG01	\$38.00
Insulation: High Temperature Solid 1/2" wall for 1/2" tube X 6' long	IS12	\$9.75
Insulation: High Temperature Solid 1/2" wall for 3/4" tube X 6' long	IS34	\$13.00

Value System 2 - Open Loop 110 Volt, Temperate Climate

Qualifies for Federal Tax Credit under SRCC OG-100 - Not SRCC OG-300 Certified

Value System 2 has a 110 Volt circulator controlled by a Differential Controller with 2 sensors, built in re-circulation light freeze protection and dual Digital Temperature readouts. It is for use in areas with no freeze or very light freeze. This system circulates potable water through the collectors and then returns the solar heated water into the storage tank. The standard configuration used a "Quick Connect" that replaces the drain at the bottom of the tank with a "coaxial" fitting. This fitting allows the solar collector's feed and return line to share the same hole. Returning solar heated water goes through a center tube into the tank. The warmer solar heated water immediately rises and at the same time cool water is being sucked by the solar pump through the space around the hot return tube.

System 2 is an open loop system with traditional 110 Volt pump and differential control like offered on many other sites. The big difference is that it is much easier to install and far more complete than systems offered on other sites.

Temperate System 2 Features:

110 Volt Pump with Digital Readout Differential Control with line cords
Light Weight, Easy to install collectors with all copper high performance absorbers
Complete "Easy Mount" rail system
All solar Loop Parts and Fittings Included except tubing.
No Soldering Required for the entire solar Loop
"Quick Connect" to bottom of tank or optional Top Connects available
Choice of "Stacked" or "Side by Side" collector layouts
Choice of 2 Standard and 24 Optional Collector Trim Colors
A choice of options to make the system just right for you

Temperate System 2 Parts List:

10 or 20 sq. ft solar thermal collector(s), 20" wide x 6' or 12' long • Rail flush mounting kit • 110 Volt Pump with line cord • Differential Controller with line cord and 2 sensors (**with built in Re-circulation Freeze Protection**) • Compression unions • Lag screws • Washers • Tec screws • 6' sample section of high temp insulation • "Quick Connect" Kit for existing or added water heater with shut off and drain valves • Floating ball check valve ("Bottom Connect" is standard, "Top Connect" (TC02) is available at \$60.00 extra charge) • Solar Loop Pressure Relief Valve (PRV) • coin vent with pre-soldered assembly • Installation and Owner's Manuals.

Not Supplied: Storage Tank, 50' roll of copper tubing, water side plumbing, Tempering valve, Insulation.

Temperate System 2:	Model #	Price
(1) 10-01 (10 ft²) – Cabin / Boat / Motor-Home	100121C	\$1,095.00
(2) 10-01 (20 ft²) for 1 to 2 people	100122C	\$1,395.00
(3) 10-01 (30 ft²) for 3 to 4 people	100123C	\$1,645.00
(4) 10-01 (40 ft²) for 3 to 5 people	100124C	\$1,895.00
(5) 10-01 (50 ft²) for 4 to 6 people	100125C	\$2,145.00
(6) 10-01 (60 ft²) for 5 to 7 people	100126C	\$2,395.00
(8) 10-01 (80 ft²) for 6 to 10 people, SSCI Only	100128C	\$2,895.00

System 2 Collector Configuration Options:		
Standard Color: Musket Brown (a dark architectural brown)	C101	\$0.00
Standard Color Option: Dove Gray (an attractive Medium Gray)	C109	\$0.00
Optional Trim Colors: Choose from one of 24 Optional Colors	CXXX	\$85.00
Stacked Collector Array Installation Kit (default):	SC01	\$0.00
Side by Side Collector Array Installation Kit (End to End Option for Even Numbers of Collectors):	SSC1	\$30.00
Substitute One (1) 20-02 collector for every Two (2) 10-01 collectors - Minimum 2, 20-01 collectors, requires shipment by freight. Can Not be used with 3, or 5 collector systems.	SU20	\$0.00
Recommended Light Freeze Valve Option: 45°F to start opening, Dole 45 kit includes all fittings for light freeze protection to 30°F.		
For Standard Stacked mounting system	FV04	\$118.00
For Optional SSC1 Side by Side mounting system	FV05	\$126.00
Temperate System 2 Options		
50 foot roll of 3/8" ID, 1/2" OD soft copper tubing	TR50	\$98.00
Tempering Valve (3/4" C x C x C)	MV01	\$98.00
Solar Top Connect without Tempering Valve (for flex connect to water side)	TC02	\$60.00
Solar Top Connect with Tempering Valve (for flex connect to water side)	TC03	\$245.00
Top Tempering Valve Assembly - use with bottom connect or 4 port solar tank, for flex connect to water side, pre-soldered for easy installation	MVT1	\$185.00
180°F High Temperature snap switch (place on cold in) Opens at 180°F, Closes at 140°F	H180	\$22.00
Quad Flow Diverter (with 4 - 3/4" solder connections for duel tanks)	QF34	\$84.00
Digital Twin Temperature Readout with sensors, tape, and spare set of batteries	DTT1	\$78.00
250° F 2" Temperature Gauge with 1/2" MPT fitting	TG01	\$38.00
Insulation: High Temperature Solid 1/2" wall for 1/2" tube X 6' long	IS12	\$9.75
Insulation: High Temperature Solid 1/2" wall for 3/4" tube X 6' long	IS34	\$13.00

Premium System 5 - Closed Loop PV 12 Volt, Hard Freeze Climate

System 5 is Solar Rating and Certification Corporation (SRCC) "OG-300" System Certified and Qualifies for the 30% Federal Tax Credits. Cloudier and colder climates requires more collector area.

Hard Freeze Climate - Up to -54° F or areas with bad water quality.

Premium, COMPLETE, No Solder System 5 Kits include:

Premium System 5 is **100% Run by the Sun!** It has a 12 Volt circulator controlled by a PV Panel and has dual Digital Temperature readouts. It is for use in areas with Hard Freeze. This closed loop system circulates a special Non-Toxic Propylene Glycol Antifreeze solution through the collectors and then thru a Heat Exchanger in the storage tank. This High Value system is so complete, it even includes **FREE!** 36' of High Temperature insulation, as well as **FREE 2 Gallons of Propylene Glycol!**

Hard Freeze System 5 Features:

Skyline Premium: The Most Complete Solar Water Heating System Kits in the World!

- 12 Volt Pump with Photovoltaic Panel
- Light Weight, Easy to install collectors with all copper high performance absorbers
- Complete "Easy Mount" rail system
- Digital Twin Temperature Readout with sensors, tape, and spare set of batteries
- All solar Loop Parts and Fittings including pre-soldered assemblies
- 50' roll of soft copper tubing with compression unions and Ells
- **FREE!** 36' of 1/2" wall high temperature insulation
- Tempering Valve (3/4" C x C x C) also no solder Tempering Valve options
- No Soldering Required for the entire solar Loop
- High Efficiency Rheem / Rudd Heat Exchanger Tank with easy connections
- **FREE!** Option: Choice of "Stacked" or "Side by Side" collector layouts
- Choice of 2 Standard and 24 Optional Collector Trim Colors
- **FREE!** 2 Gallons of Heavy Duty Non-Toxic Propylene Glycol Included
- A choice of options to make the system just right for you

Freeze Climate System 5 Parts List - SO COMPLETE!:

10 or 20 Square Foot Solar Thermal Collector (s), 20" wide x 6' or 12' long with Rail flush mounting kit • PV pump and 10 , 20 or 30 Watt PV Panel • 50' roll of 1/2" OD soft copper • Compression unions • 25' of sensor wire • Lag screws • Washers • Tec screws • 36' of high temp insulation • Hose bibs and isolation valves to charge the solar loop • Expansion tank and floating ball check valve on the return • Solar Loop Pressure Relief Valve (PRV) • PRV splash guard • Coin Vent with presoldered assembly • Temperature gauges • Tempering valve • 2 Gallons of Heavy Duty Propylene Glycol • Special OG-300 Labeling • Installation and Owner's Manuals

Unless Ordered, Storage Tank is not supplied, water side plumbing is not supplied.

81V080HE1 Tank Required with System 5 for OG 300 Rating

The System 5 Prices below do not include the Rheem 80 gallon Heat Exchanger Tank

(4) 10-01 (40 ft²) for 2 to 4 people - WITHOUT 81V080HE1	100154C80EX	\$2,375.00
(6) 10-01 (60 ft²) for 4 to 6 people - WITHOUT 81V080HE1	100156C80EX	\$2,955.00
(8) 10-01 (80 ft²) for 6 + people - SSCI Only, WITHOUT 81V080HE1	100158C80EX	\$3,495.00

The System 5 Prices below include the Rheem 80 OR 120 gallon Heat Exchanger Tank (WT)

(4) 10-01 (40 ft²) for 2 to 4 people - WITH 81V080HE1 Tank	100154C80EXWT	\$3,980.00
(6) 10-01 (60 ft²) for 4 to 6 people - WITH 81V080HE1 Tank	100156C80EXWT	\$4,520.00
(6) 10-01 (60 ft²) for 4 to 6 people - WITH 82V120HE1 Tank	100156C120EXWT	\$4,820.00

(8) 10-01 (80 ft ²) for 6 + people - SSCI Only, WITH 81V080HE1 Tank	100158C80EXWT	\$4,995.00
(8) 10-01 (80 ft ²) for 6 + people - SSCI Only, WITH 82V120HE1 Tank	100158C120EXWT	\$5,295.00

System 5 Collector Configuration Options:		
Standard Color: Musket Brown (a dark architectural brown)	C101	\$0.00
Standard Color Option: Dove Gray (an attractive Medium Gray)	C109	\$0.00
Optional Trim Colors: Choose from one of 24 Optional Colors	CXXX	\$85.00
Stacked Collector Array Installation Kit (default):	SC01	\$0.00
Side by Side Collector Array Installation Kit (End to End Option for Even Numbers of Collectors):	SSC1	\$0.00
Substitute One (1) 20-02 collector for every Two (2) 10-01 collectors - Minimum 2, 20-01 collectors, requires special crating and shipment by freight, call factory.	SU20	\$0.00
Freeze Climate System 5 Options		
Extra 50 foot roll of 3/8" ID, 1/2" OD soft copper tubing	TR50	\$98.00
Top Tempering Valve Assembly - use with Heat Exchanger solar tank, for flex connect to water side, pre-soldered for easy installation	MVT1	\$135.00
180°F High Temperature snap switch (place on cold in) Opens at 180°F, Closes at 140°F	H180	\$22.00
Quad Flow Diverter (with 4 - 3/4" solder connections for duel tanks)	QF34	\$84.00
Extra Digital Twin Temperature Readout with sensors, tape, and spare set of batteries	DTT1	\$78.00
Differential Control (12 Volt DTC-1 with sensors)	DC06	85.00
250° F 2" Temperature Gauge with 1/2" MPT fitting	TG01	\$38.00
Insulation: High Temperature Solid 1/2" wall for 1/2" tube X 6' long	IS12	\$9.75
Insulation: High Temperature Solid 1/2" wall for 3/4" tube X 6' long	IS34	\$13.00
Rheem Rudd Richmond 80 Gallon 81V080HE1 tank, Delivered	81V080HE1	\$1,565.00
Rheem Rudd Richmond 120 Gallon 82V120HE1 tank, Delivered	82V120HE1	\$1,895.00
1 Gallon of Heavy Duty Propylene Glycol, For down to -54 F and up to 300 F / 10 year life. Mix 50/50 or less depending on lowest temperatures	PGHD	\$26.00

Value System 4 - Closed Loop 110 Volt, Hard Freeze Climate

(With OG-100 Collectors - Qualifies for Federal Tax Credit)

Value System 4 has a 110 Volt circulator controlled by a Differential Controller with 2 sensors and dual Digital Temperature readouts. It is for use in areas with Hard Freeze. This closed loop system circulates a special Non-Toxic Propylene Glycol Antifreeze solution through the collectors and then thru a Heat Exchanger either in or attached to a storage tank. System 4 is available in several configurations to meet special needs.

System 4 is a closed loop system with traditional 110 Volt pump and differential control like offered on many other sites. The big difference is that it is much easier to install and far more complete than systems offered on other sites. Our "Power Rod" External Heat Exchanger (PR) is a double wall Tube and Shell.

Freeze Climate System 4 Features:

- 110 Volt Pump with Digital Readout Differential Control with line cords
- Light Weight, Easy to install collectors with all copper high performance absorbers
- Complete "Easy Mount" rail system
- Choice of Freeze Protected Closed Loops
- Option: Easy Install High Efficiency Power Rod 2 pump Heat Exchanger
- All solar Loop Parts and Fittings including pre-soldered assemblies
- No Soldering Required for the entire solar Loop
- Choice of 2 Standard and 24 Optional Collector Trim Colors
- A choice of options to make the system just right for you

Freeze Climate System 4 Parts List:

- 10 or 20 sq. ft solar thermal collector(s), 20" wide x 6' or 12' long • Rail flush mounting kit • 110 Volt Pump, with line cord • Differential Controller with 2 sensors and line cord • Compression unions • Lag screws • Washers • Tec screws • 6' sample section of high temp insulation • Choice of "Quick Connect" Heat Exchange Kits Kit for existing or added water heater with shut off and charge / drain valves • Floating ball check valve • Solar Loop Pressure Relief Valve (PRV) • Air vent with pre-soldered assembly • Installation and Owner's Manuals.

Not Supplied: water side plumbing, Storage Tank (Internal Heat Exchanger Tank can be purchased separately under options), 50' roll of copper tubing, water side plumbing, Insulation, Tempering valve, Temperature Readout, Propylene Glycol.

System 4 Set up for use with 80 or 120 Gallon Rheem HE or other Internal Heat Exchanger Tanks	Model #	Price
(3) 10-01 (30 ft²) for 1 to 3 people (80 gallon HE tank recommended)	100143C	\$1,595.00
(4) 10-01 (40 ft²) or 2 20-01 for 3 to 5 people (80 gallon HE tank recommended)	100144C	\$1,845.00
(5) 10-01 (50 ft²) for 3 to 5 people (80 gallon HE tank recommended)	100145C	\$2,095.00
(6) 10-01 (60 ft²) for 4 to 6 people (80 - 120 gallon HE tank recommended)	100146C	\$2,345.00
(8) 10-01 (80 ft²) for 6 people + (120 gallon HE tank recommended)	100148C	\$2,845.00
<hr/>		
System 4 Set up With "Power Rod" Heat Exchanger and 2, 110 Volt Circulators	Model #	Price
(3) 10-01 (30 ft²) for 1 to 4 people (50 - 66 gallon tank recommended)	100143CPR	\$2,195.00
(4) 10-01 (40 ft²) or 2 20-01 for 3 to 5 people (80 gallon tank recommended)	100144CPR	\$2,445.00
(5) 10-01 (50 ft²) for 3 to 5 people (80 gallon tank recommended)	100145CPR	\$2,695.00
(6) 10-01 (60 ft²) for 4 to 6 people (80 - 120 gallon tank recommended)	100146CPR	\$2,945.00
(8) 10-01 (80 ft²) for 6 people + SSCI Only (120 gallon tank recom.)	100148CPR	\$3,445.00

System 4 Continued

SPECIAL PV Powered "POWER ROD" External Heat Exchanger (PRPV) for non-self cleaning 50 to 120 Gallon Tanks: It doesn't get easier than this! This Kit allows you to easily connect a closed loop to any standard (non self-cleaning) water heater! Kit includes a very efficient double wall* Tube in Shell Type External Heat Exchanger with 2, 12 Volt PV Circulators and 2 PV Panels, Quick Connect Kit for installation to any standard tank. **FREE!** Solar loop digital temperature gauges and **FREE!** Tempering Valve are included. **FREE!** 50" roll of 1/2" OD Soft Copper.

(3) 10-01 (30 S/F) for 1 to 4 people (50 - 66 gallon tank recommended)	100143CPRPV	\$2,625.00
(4) 10-01 (40 S/F) for 3 to 5 people: (80 gallon tank recommended)	100144CPRPV	\$2,875.00
(5) 10-01 (50 ft²) for 3 to 5 people (80 gallon tank recommended)	100145CPRPV	\$3,215.00
(6) 10-01 (60 ft²) for 4 to 6 people (80 - 120 gallon tank recommended)	100146CPRPV	\$3,465.00
(8) 10-01 (80 ft²) for 6 people + SSCI Only (120 gallon tank recom.)	100148CPRPV	\$3,865.00

Collector Configuration Options:

Standard Color: Musket Brown (a dark architectural brown)	C101	\$0.00
Standard Color Option: Dove Gray (an attractive Medium Gray)	C109	\$0.00
Optional Trim Colors: Choose from one of 24 Optional Colors	CXXX	\$85.00
Stacked Collector Array Installation Kit (default):	SC01	\$0.00
Side by Side Collector Array Installation Kit (End to End Option for Even Numbers of Collectors):	SSC1	\$30.00
Substitute One (1) 20-02 collector for every Two (2) 10-01 collectors - Minimum 2, 20-01 collectors, requires special crating and shipment by freight, call factory.	SU20	\$0.00

Freeze Climate System 4 Options

50 foot roll of 3/8" ID, 1/2" OD soft copper tubing	TR50	\$98.00
Tempering Valve (3/4" C x C x C)	MV01	\$98.00
Top Tempering Valve Assembly - use with Heat Exchanger solar tank, for flex connect to water side, pre-soldered for easy installation	MVT1	\$185.00
180°F High Temperature snap switch (place on cold in) Opens at 180°F, Closes at 140°F	H180	\$22.00
Quad Flow Diverter (with 4 - 3/4" solder connections for duel tanks)	QF34	\$84.00
Digital Twin Temperature Readout with sensors, tape, and spare set of batteries	DTT1	\$78.00
250° F 2" Temperature Gauge with 1/2" MPT fitting	TG01	\$38.00
Insulation: High Temperature Solid 1/2" wall for 1/2" tube X 6' long	IS12	\$9.75
Insulation: High Temperature Solid 1/2" wall for 3/4" tube X 6' long	IS34	\$13.00
Double Wall "Power Rod" Quick Connect	(PRQC)	\$178.00
Rheem Rudd Richmond 80 Gallon 81V080HE1 tank, Delivered	81V080HE1	\$1,565.00
Rheem Rudd Richmond 120 Gallon 82V120HE1 tank, Delivered	82V120HE1	\$1,895.00
1 Gallon of Heavy Duty Propylene Glycol , For down to -54 F and up to 300 F / 10 year life. Mix 50/50	PGHD	\$26.00

System and Collector Options

System Tilt Kits For "Skyline" 10-01 or 20-01

Side by Side Collector Array SYSTEM Option | SSC1 | \$60.00

Note: Side by side installation option available for even numbers of collectors, up to 12, 10-01s or 8, 20-01s per array. 8, 20-01s are an ideal space heating or commercial configuration. With this option, the rail lengths and hardware are adjusted. Allow 24.5' in total width.

1 ½" aluminum Ell legs with 1 ½" aluminum Ell feet and hardware tilt collectors approximately 18 degrees or as specified from existing roof angle.		
Tilt kits are used when a better winter angle is desired on a low pitch roof or to "re-orientate" collectors to face south by running the collectors up and down an East or West facing roof. The Default Tilt kit is 18 Degrees. Please specify other tilt angle.		
Single Collector rear tilt leg, (No rail, use 2 per 10-01 collector, 3 per 20-01 collector)	TK01-1	8.00 ea
The Tilt Kits Below are for Stacked 10-01 collectors (6' long):		10-01 Collector
1 collector = 26" long, 1" sq. alum. tube rails with 6" + legs and hardware	TK01-2	\$50.00
2 collectors = 48" long, 1" x 2" alum. channels with 12" + legs and hardware	TK02-2	\$80.00
3 collectors = 70" long, 1" x 2" alum. channels with 18" + legs and hardware	TK03-2	\$115.00
4 collectors = 92" long, 1' x 2" alum. channels with 24" + legs and hardware	TK04-2	\$165.00
The Tilt Kits Below are for Stacked 20-01 collectors: (12' long)		20-01 Collector
1 collector = 26" long, 1" sq. alum. tube rails with 6" + legs and hardware	TK01-3	\$65.00
2 collectors = 48" long, 1" x 2" alum. channels with 12" + legs and hardware	TK02-3	\$110.00
3 collectors = 70" long, 1" x 2" alum. channels with 18" + legs and hardware	TK03-3	\$145.00
4 collectors = 92" long, 1' x 2" alum. channels with 24" + legs and hardware	TK04-3	\$205.00
The Tilt Kits Below are for Side x Side 10-01 collectors: (12' - 2" long)		10-01 Collector
2 collector = 26" long, 1" sq. alum. tube rails with 6" + legs and hardware	TK01-4	\$100.00
4 collectors = 48" long, 1" x 2" alum. channels with 12" + legs and hardware	TK02-4	\$160.00
6 collectors = 70" long, 1" x 2" alum. channels with 18" + legs and hardware	TK03-4	\$230.00
8 collectors = 92" long, 1' x 2" alum. channels with 24" + legs and hardware	TK04-4	\$330.00
The Tilt Kits Below are for Side x Side 20-01 collectors: (24' - 2" long)		20-01 Collector
2 collector = 26" long, 1" sq. alum. tube rails with 6" + legs and hardware	TK01-6	\$130.00
4 collectors = 48" long, 1" x 2" alum. channels with 12" + legs and hardware	TK02-6	\$220.00
6 collectors = 70" long, 1" x 2" alum. channels with 18" + legs and hardware	TK03-6	\$290.00
8 collectors = 92" long, 1' x 2" alum. channels with 24" + legs and hardware	TK04-6	\$410.00

Beautiful Collector COLOR Options

One change covers change in Trim color for all collectors in the order

Default Color

Musket Brown (C101) OR Free Optional Dove/Old Town (Medium) Gray (C109)

Optional Colors

Colonial (Light) Gray (C102), Tahoe Blue (C103), Colonial Red (C104), Forest Green (C105), White (C106), Buckskin Brown (C107), Beaver (medium) Brown (C108), C.B. (Medium) Blue (C110), Spanish Green (C111), Storm/Slate (Dark) Gray (C112), Royal Brown (C113), Ivory (C114), Sea Blue (C115), Leaf Green (C116), Pebblestone Clay (C117), Woodbeige (C118), Peach (great on many light orange tile roofs) (C119), Almond (C120), Black (C121), Adobe Tan (C122), Classic Cream (C123), Bronze (CO124), Heritage Cream (CO125), Marine Green (CO126).

Optional Colors | C### | \$85.00

COLLECTOR AND COMPONENT Price List

COLLECTOR and MOUNTING RAIL PRICE LIST

5840 Gibbons Dr. Suite G, Carmichael, CA 95608
Phone: (888) 801-9060 (916) 481-7200 Fax: 481-7203 Email: info@SolarRoofs.com

This Price List is for Individual Components

For Systems, Please See SYSTEM Price List

Note: This price list supercedes all previous price lists - Check Web Site for Updates.

General Sizing Guidelines

Systems should be sized to have a min. of 1 gallon of storage per FT². of collector area, more in hot climates. One 10-01 collector is good for situations such as campers, boats, cabins or as a start to energy independence at home.

To supply 60% - 85% of the hot water needs from solar for residential applications in warm climates the following is recommended: (2) 10-01 collectors, or (1) 20-01 collector for the first person, and (1) additional 10-01 collector per person or (1) 20-01 for every 2 people. In cloudy and/or cold areas where a heat exchanger is needed add (2) 10-01 collectors, or (1) 20-01 for the second person.

Example: A family of 4 in New England should have either six (6) 10-01 or three (3) 20-01 collectors.

Standard Color is Musket Brown (CO101), with a Free option of Dove (Medium) Gray (C109)

(Other color options are available at an extra cost)

For Delivery Options, Please refer to page 2

Note: Fill in # of collectors



Premium 10-01 Collectors

SRCC OG-100 Rated

10 Square Feet at 19 pounds each 20" wide x 6' long x 3" thick

Single piece unit (Includes 4 mounting ell kit)	1001#C	\$299.00
--	---------------	-----------------

A single 10-01 collector includes: (4) 1 1/2" Mounting Ell brackets, (8) color-coded screws to attach mounting ells, and (4) large washers.

10-01 Mounting Rails

SolarRoofs.com provides 10-01 collectors with specific length rails for 1, 2, 3 and 4 stacked collectors. 1 and 2 coll. use 4 mounting points (4 lags) and 3 or 4 coll. Use 6 mounting points (6 lags). 2, 3 and 4 coll. 10-01 kits have color-coded mounting U clips with carriage bolts to make the installation of the longer collectors easier.

(2) Mounting rails with lags (per collector)	MR10#C	\$24.00
---	---------------	----------------

Premium 20-01 Collectors

SRCC OG-100 Rated

20 Sq. Ft., 20" wide X 12' long X 3" thick, 38 pounds

Single piece unit (Includes 6 mounting ell kit)	2001#C	\$560.00
--	---------------	-----------------

A single 20-01 collector includes: (6) 1 1/2" Mounting Ell brackets, (12) color-coded screws to attach mounting ells and (6) large washers.

20-01 Mounting Rails

SolarRoofs.com provides 20-01 collectors with specific length rails for 1, 2, 3 and 4 stacked collectors. 1 and 2 coll. use 4 mounting points (4 lags) and 3 or 4 coll. Use 6 mounting points (6 lags). 2, 3 and 4 coll. kits have color-coded mounting U clips with carriage bolts to make the installation of the longer collectors easier.

(3) Mounting rails with lags (order per collector)	MR20#C	\$32.00
---	---------------	----------------

Custom Parallel Flow Option

For **SRCC OG-300 System 3** reoriented tilt Collector and for Drainback Systems

These custom collectors are required for the **SRCC OG-300 System 3** reoriented tilt kit. With bottom (through roof) or top and bottom side feed and return on one end, slope panel 1/4" per 2' (1.5" overall absolute rise per panel), with 3 mounting rails **Add \$60 per collector (Call for details)**

Right PFR1 (feed and return are out the end of the collector)	PFR1	\$60.00
Left PFL1 (feed and return are out the end of the collector)	PFL1	\$61.00

10-01 and 20-01 Collector Tubing Installation Kits

(SCO1 Stacked Array Kit is Standard with system, SSC1 is a no cost (N/C) option system option)

These kits include the required Pressure Relief Valve, an air coin or auto. vent, all the parts required to connect the collectors to 1/2" OD copper pipe without soldering (see collector installation manual.)

Stacked Collector Array Installation Kit: (1) compression Ell for the feed, (1) compression TEE, (1) 150 Lb pressure relief valve and air vent with pre-soldered adaptor, (1) through roof compression Ell, (1) 2" stick of 1/2" OD copper for the return, & (2) roof boots	SC01	\$78.00
Side by Side Collector Array Installation Kit: (2) Compression Ells, (1) Compression TEE for the feed, (1) Compression ell, (2) Compression TEEs, (1) 150 Lb pressure relief valve and air vent with pre-soldered adaptor to connect to compression TEE for the return, (2) 2" sticks of 1/2" OD copper, & (2) roof boots	SSC1	\$108.00

SC01 Open Loop Light Freeze Valve with install Kit (for Light Passive freeze protection to 30F) FULLY DRAIN BEFORE HARD FREEZE! (STACKED ARRAY ONLY)	FV04	\$118.00
SSC1 Open Loop Light Freeze Valve with install Kit (for Light Passive freeze protection to 30F) FULLY DRAIN BEFORE HARD FREEZE! (SIDE BY SIDE ARRAY ONLY)	FV05	\$126.00

System Top Connect and Tempering Valve Options

- Not Enough Room for the open loop Bottom Connect?
- Don't Know how to or don't like to Solder?
- Make your System installation Even Easier with the Following No Solder Water Side Options:

Open Loop Top Connect Option

System 1 and 2 Top Connect Option Allows for a no solder solar loop with brass connections to the top of the tank using 3/4" threaded water connections (No Tempering Valve Included):	TC02	\$60.00
---	-------------	----------------

Open Loop Top Connect and Tempering Valve Options

System 1 and 2 Top Connect Option, with Tempering Valve Allows for a no solder solar loop and tempering valve with brass connections to the top of the tank using 3/4" threaded water connections:	TC03	\$245.00
System 3 Top Connect Option with Tempering Valve Allows for a no solder solar loop and tempering valve with brass connections to the top of the tank using 3/4" threaded water connections (with complete system):	TC04	\$195.00

Tank Top Tempering Valve Options for Bottom Connect and Freeze Protected Tanks

For systems 1, 2, and 4, with Added Tempering Valve and brass connections Allows for a no solder tempering valve connection to the top of most tanks using 3/4" threaded water connections (Tempering Valve Included):	MVT1	\$185.00
System 3 and 5 with included Tempering Valve and Dielectric Unions Allows for a no solder tempering valve connection to the top of most tanks using 3/4" threaded water connections, with temperature gauge (with complete system) This option is ideal with 4 Top Port or 2 Side Port Solar Water Tanks.	MVT2	\$135.00

SolarRoofs.com System Components and Parts

Note: Other Pumps, PV Panels and Options are available on request.

Retail Kit (specify system)	RK01	\$160.00
50' roll of 1/2" OD / 3/8" ID copper, 2 compression unions, 2 compression ells, 25' # 18 wire, wire ties, O and M and Installation manuals.		
"Quick Connect" Kit: open loop system connection, replaces tank drain.	QC01	\$380.00
Assembly with floating check valve, isolation valves, 3 drain hose bibs, 1/2" ID copper stub on return and feed side:		
"Top Connect" Kit: Same as QC01 but connects to top of tank	TC02	\$430.00
Same as QC01 but connects to top of tank		
"External Heat Exchanger" Kit (add 2 pumps required and not included)	QRK1	\$820.00
Pumped heat exchanger assembly with 1 floating check valves, charging hose bibs with isolation valve and expansion tank, set up for 1/2" nominal copper		
80 Gallon Heat Exchange Kit	HE80	\$425.00
Full connections for the 80 gallon Rheem / Rudd heat exchanger, pre-assembly with (1) floating check valve, charging hose bib ports with isolation valve, pressure gauge, expansion tank		
50 foot roll of 3/8" ID, 1/2" OD soft copper tubing	TR50	\$98.00
Taco 006 110V Circulator (C x C)	TC01	\$190.00
Laing D5 12V - 24 V Circulator	D571	\$266.00
EISid 10 Watt, 12 Volt Circulator	ES10	\$277.00
March 809 18 Watt 12V Circulator	HC18	\$265.00
10 Watt 12V Panel	PV10	\$160.00
20 Watt 12V Panel	PV20	\$260.00
30 Watt 12V Panel	PV30	\$360.00
35°F Freeze "Dole" Valve (Starts to drip water at 40F – 3/4" thread)	FV35	\$95.00
45°F Freeze "Dole" Valve (Starts to drip water at 40F – 3/4" thread)	FV45	\$95.00
40°F Freeze Snap Switch closes at 40 F - FS02 (12 Volt - use with transformer)	FS02	\$55.00
12 Volt Freeze Snap Switch Control Box (Assembled with 2 diodes, 25' wire and 110V to 12VDC Transformer for PV Recirculation, switch and labeling)	FS03	\$145.00
180°F High Temperature snap switch (place on cold in) Opens at 180°F, Closes at 140°F	H180	\$22.00
110°F Normally Closed snap switch (place in collector hot out) For use with gas water heaters to prevent heat loss during cool mornings, closes at 110°F, & opens at 90°F	S110	\$32.00
250° F 2 1/2" Temperature Gauge (with 1/2" brass tee and adaptor)	TG01	\$38.00
Digital Twin Temperature Readout with sensors, tape, and spare set of batteries	DTT1	\$78.00
Differential Control (110 Volt Independent Energy GL30 with sensors, line cord & recirculation option)	DC01	\$198.00
Differential Control (110 Volt Eagle 2 with 2 Digital readout, sensors, line cord & recirculation option)	DC02	\$228.00
Differential Control (12 Volt DTC-1 with sensors)	DC06	\$85.00
150 Pound Pressure Relief Valve (Adjustable) - 1/2" male	PR15	\$38.00
Floating Ball Check Valve with 1/2" MPT (threads at both ends)	CV01	\$36.00
Air Vent (specify 1/8" or 1/4" male thread)	AV01	\$25.00
Tempering Valve (3/4" C x C x C)	MV01	\$98.00
Quad Flow Diverter (with 4 - 3/4" solder connections for duel tanks)	QF34	\$84.00
20 Gallon storage tank (with thermosyphon connections for system 1, 2 and 3 (130 lb)	UT20	\$475.00
50 Gallon SolarRoofs.com's custom heat exchanger tank (200 lb)	SRC50HE1	\$885.00
80 Gallon Heat Exchanger Tank (required for SRCC rating) Price includes delivery to the 48	81V080HE1	\$1,565.00
120 Gallon Heat Exchanger Tank Price includes delivery to the 48	81V120HE1	\$1,895.00
80 Gallon 4 Top Port Solar Tank Florida Special - Price includes delivery in Florida	TC80FL	\$596.00

Terms: Full payment upon order. Shipping is usually within 10 business days on standard orders but seasonal variations may effect delivery times. Please let us know if you need a quote for expedited shipments.

Notes: Special arrangements and discounts can be made for volume purchases with variations to best suite your needs. Custom collectors, including especially attractive flush mount collectors including a full-length flashing and mounting rail with the feed and return out of the bottom of the collector are available. **PLEASE Check Web Site for Monthly updates. All prices and specifications are subject to change without notice.**

SolarRoofs.com ORDER / INVOICE FORM Dealer: _____ Order # _____

Phone: (916) 481-7200 Fax: 481-7203 Web: www.SolarRoofs.com Email: Info@SolarRoofs.com

Mail to: SolarRoofs.com 5840 Gibbons Dr. Suite G, Carmichael, CA 95608 Oct. 20, 2007

Name: _____ Date: _____

Billing Address: _____ City: _____ State: _____ Zip: _____

Shipping Address: _____ City: _____ State: _____ Zip: _____

Phone # _____ Fax # _____ Cell: _____

Email: _____ Other Instructions: _____

The length of my pipe run (collector to tank) is: _____ Feet

My water heater is: Electric ___ Gas ___ Propane ___ Oil ___

people in home _____ Lowest Temperatures _____ F.

Adding solar storage? ___ Yes ___ No * Gallons _____

*Existing Storage Gal. _____ / Re-circulation Yes: ___ No: ___

8" Clearance in front of storage tank? ___ Yes ___ No

Type of Roof _____

Orientation of Roof to South _____⁰ Pitch _____⁰

Mounting System: Stacked _____ Side by Side _____

Tilt: _____ Degree: _____ Other: _____

Color: Musket ___ Dove Gray ___ Optional: _____

Notes: _____

Note: System Number = X001 (+ system # if any) + number of collectors (C), or System Type then number of collectors
Example: 2 1001 Collector only: 10012C,

System: _____ 01 _____ C _____	
_____ @ \$ _____	\$ _____
_____ @ _____	\$ _____
_____ @ _____	\$ _____
_____ @ _____	\$ _____
_____ @ _____	\$ _____
_____ @ _____	\$ _____
_____ @ _____	\$ _____
_____ @ _____	\$ _____
_____ @ _____	\$ _____

TOTAL Before Tax: \$ _____

CA Tax (Total X .07xx):
\$ _____

BOXING: \$ _____

SHIPPING: \$ _____

BALANCE TOTAL with Tax (if required): \$ _____

✓ Check made out to **SolarRoofs.com** Enclosed: _____ Being Mailed: _____

CHARGE TO MY: MASTERCARD VISA AMERICAN EXPRESS

CARD # _____ EXP. DATE ___ / ___

You have my permission to charge my card for the above total.

Signature or Verified By Order Taker: _____ (Verify Card address and Zip Code)

Return Policy: Check Shipment upon arrival, refuse if damaged. Customer must file claim for damage if accepted.
85% materials refund will be made upon return of the complete system in good condition, with shipping prepaid to the factory, within 10 days of shipment arrival. Company will cover shipping if there is a factory defect not related to shipping.

Thank you for your order! Your installation help number for any questions you have is: **888-801-9060**. You are now on your way to receiving a truly great product value which will Benefit your family and the environment for many years to come! Please "Spread the Word" and Help Achieve a "Million Solar Roofs" as soon as possible, after all, what the Environment needs are tens of millions of Solar Roofs!

Approved by: _____